

## BCL10 antibody [N1C3]

**Cat. No. GTX109159**

<b>Host</b>	Rabbit
<b>Clonality</b>	Polyclonal
<b>Isotype</b>	IgG
<b>Application</b>	WB, IHC-P, IP, ChIP assay
<b>Reactivity</b>	Human, Mouse

Reference ( 1 )  
 Package  
 100 µl, 25 µl

### APPLICATION

#### Application Note

\*Optimal dilutions/concentrations should be determined by the researcher.

Suggested dilution	Recommended dilution
WB	1:500-1:3000
IHC-P	1:100-1:1000
IP	1:100-1:500
ChIP assay	Assay dependent

Not tested in other applications.

<b>Calculated MW</b>	26 kDa. ( <a href="#">Note</a> )
<b>Product Note</b>	IP/MS validation was supported by references (PMID:30377394)

### PROPERTIES

<b>Form</b>	Liquid
<b>Buffer</b>	0.1M Tris, 0.1M Glycine, 10% Glycerol
<b>Preservative</b>	0.01% Thimerosal
<b>Storage</b>	Store as concentrated solution. Centrifuge briefly prior to opening vial. For short-term storage (1-2 weeks), store at 4°C. For long-term storage, aliquot and store at -20°C or below. Avoid multiple freeze-thaw cycles.
<b>Concentration</b>	0.45 mg/ml (Please refer to the vial label for the specific concentration.)
<b>Immunogen</b>	Full length human BCL10 Recombinant protein.
<b>Purification</b>	Purified by antigen-affinity chromatography.
<b>Conjugation</b>	Unconjugated



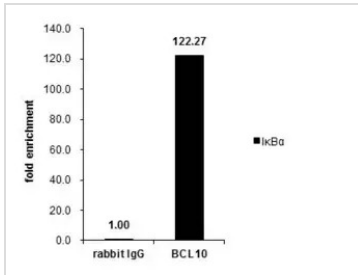
For full product information, images and publications, please visit our [website](#).

For laboratory research use only. Not for any clinical, therapeutic, or diagnostic use in humans or animals. Not for animal or human consumption.

## Note

Purchasers shall not, and agree not to enable third parties to, analyze, copy, reverse engineer or otherwise attempt to determine the structure or sequence of the product.

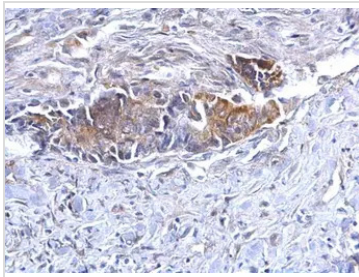
## DATA IMAGES



### GTx109159 ChIP assay Image

Cross-linked ChIP was performed with MCF-7 chromatin extract treated with TNF- $\alpha$  (10 ng/ml for 30 min) and 5  $\mu$ g of either control rabbit IgG or anti-BCL10 antibody. The precipitated DNA was detected by PCR with primer set targeting to IkB $\alpha$ .

ChIP experiment and primer designs are based on [J Biol Chem. 2006 Jan 6;281\(1\):167-75.](#)



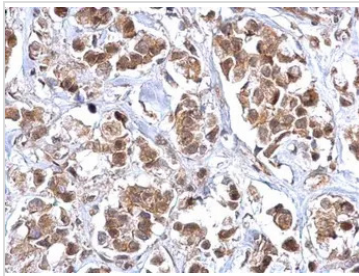
### GTx109159 IHC-P Image

BCL10 antibody [N1C3] detects BCL10 protein at cytoplasm on human colon carcinoma by immunohistochemical analysis.

Sample: Paraffin-embedded human colon carcinoma.

BCL10 antibody [N1C3] (GTx109159) diluted at 1:500.

Antigen Retrieval: Trilogy™ (EDTA based, pH 8.0) buffer, 15min



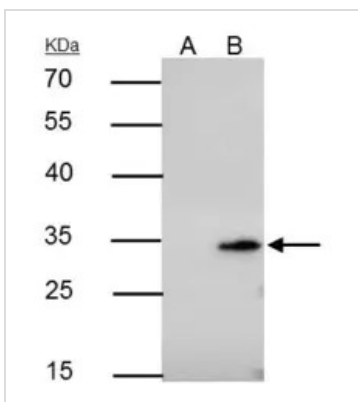
### GTx109159 IHC-P Image

BCL10 antibody [N1C3] detects BCL10 protein at cytoplasm on human breast carcinoma by immunohistochemical analysis.

Sample: Paraffin-embedded human breast carcinoma.

BCL10 antibody [N1C3] (GTx109159) diluted at 1:500.

Antigen Retrieval: Trilogy™ (EDTA based, pH 8.0) buffer, 15min



### GTx109159 IP Image

BCL10 antibody [N1C3] immunoprecipitates BCL10 protein in IP experiments.

IP samples: Raji whole cell extract

A. Control with 4  $\mu$ g of preimmune Rabbit IgG

B. Immunoprecipitation of BCL10 protein by 4  $\mu$ g BCL10 antibody [N1C3] (GTx109159)

12 % SDS-PAGE

The immunoprecipitated BCL10 protein was detected by BCL10 antibody [N1C3] (GTx109159) diluted at 1:500.

[EasyBlot anti-rabbit IgG (GTx221666-01) was used as a secondary reagent]



For full product information, images and publications, please visit our [website](#).