

## 4E-BP1 antibody [N1C3]

Cat. No. GTX109162

Host	Rabbit
Clonality	Polyclonal
Isotype	IgG
Application	WB, IHC-P, IP
Reactivity	Human, Rat

Reference ( 4 )

★★★★★ Review ( 1 )

Package

100 µl, 25 µl

## APPLICATION

## Application Note

\*Optimal dilutions/concentrations should be determined by the researcher.

Suggested dilution	Recommended dilution
WB	1:500-1:3000
IHC-P	1:100-1:1000
IP	1:100-1:500

Not tested in other applications.

Calculated MW 13 kDa. ( [Note](#) )

## PROPERTIES

Form	Liquid
Buffer	PBS, 20% Glycerol
Preservative	0.025% ProClin 300
Storage	Store as concentrated solution. Centrifuge briefly prior to opening vial. For short-term storage (1-2 weeks), store at 4°C. For long-term storage, aliquot and store at -20°C or below. Avoid multiple freeze-thaw cycles.
Concentration	0.13 mg/ml (Please refer to the vial label for the specific concentration.)
Immunogen	Full length human 4E-BP1 Recombinant protein.
Purification	Purified by antigen-affinity chromatography.
Conjugation	Unconjugated

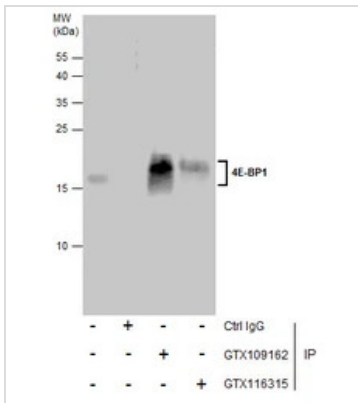
## Note

For laboratory research use only. Not for any clinical, therapeutic, or diagnostic use in humans or animals. Not for animal or human consumption.

Purchasers shall not, and agree not to enable third parties to, analyze, copy, reverse engineer or otherwise attempt to determine the structure or sequence of the product.



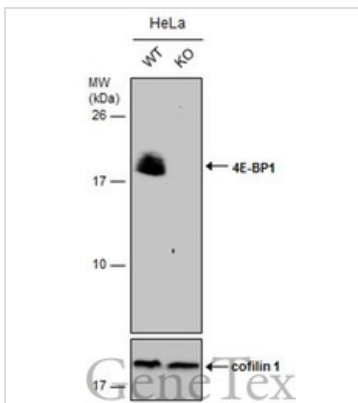
For full product information, images and publications, please visit our [website](#).

**DATA IMAGES**

**GTX109162 IP Image**

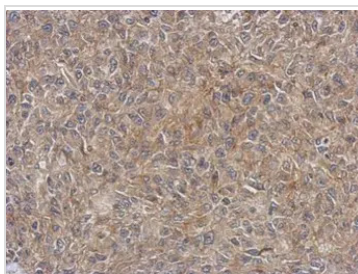
Immunoprecipitation of 4E-BP1 protein from HCT116 whole cell extracts using 5 µg of 4E-BP1 antibody [N1C3] (GTX109162) or 4E-BP1 antibody [N1C3-2] (GTX116315).

Western blot analysis was performed using 4E-BP1 antibody [N1C3] (GTX109162).

EasyBlot anti-Rabbit IgG (GTX221666-01) was used as a secondary reagent.

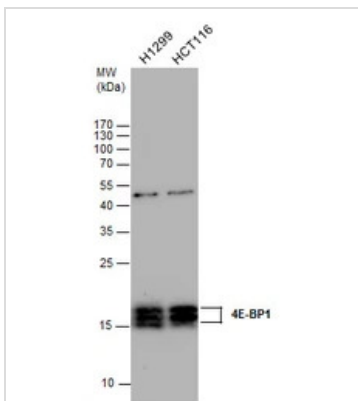

**GTX109162 WB Image**

Wild-type (WT) and 4E-BP1 knockout (KO) HeLa cell extracts (30 µg) were separated by 15% SDS-PAGE, and the membrane was blotted with 4E-BP1 antibody [N1C3] (GTX109162) diluted at 1:500. The HRP-conjugated anti-rabbit IgG antibody (GTX213110-01) was used to detect the primary antibody.


**GTX109162 IHC-P Image**

Immunohistochemical analysis of paraffin-embedded RT2 xenograft, using EIF4EBP1(GTX109162) antibody at 1:500 dilution.

Antigen Retrieval: Trilogy™ (EDTA based, pH 8.0) buffer, 15min


**GTX109162 WB Image**

4E-BP1 antibody detects 4E-BP1 protein by western blot analysis. Various whole cell extracts (30 µg) were separated by 15% SDS-PAGE, and the membrane was blotted with 4E-BP1 antibody (GTX109162) diluted at a dilution of 1:2000.



For full product information, images and publications, please visit our [website](https://www.genetex.com).