

SBDS antibody [N1C3]

Cat. No. GTX109168

Host	Rabbit
Clonality	Polyclonal
Isotype	IgG
Application	WB, ICC/IF, IHC-P, IP
Reactivity	Human, Mouse

Reference (1)

Package

100 µl, 25 µl

APPLICATION

Application Note

*Optimal dilutions/concentrations should be determined by the researcher.

Suggested dilution	Recommended dilution
WB	1:500-1:3000
ICC/IF	1:100-1:1000
IHC-P	1:100-1:1000
IP	Assay dependent

Not tested in other applications.

Calculated MW 29 kDa. ([Note](#))

Product Note Knockdown/Knockout validation was supported by references (PMID:26990993)

PROPERTIES

Form	Liquid
Buffer	PBS, 20% Glycerol
Preservative	0.025% ProClin 300
Storage	Store as concentrated solution. Centrifuge briefly prior to opening vial. For short-term storage (1-2 weeks), store at 4°C. For long-term storage, aliquot and store at -20°C or below. Avoid multiple freeze-thaw cycles.
Concentration	1.07 mg/ml (Please refer to the vial label for the specific concentration.)
Immunogen	Full length human SBDS Recombinant protein.
Purification	Purified by antigen-affinity chromatography.
Conjugation	Unconjugated



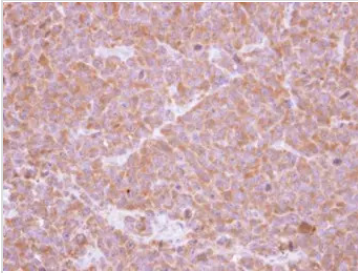
For full product information, images and publications, please visit our [website](#).

For laboratory research use only. Not for any clinical, therapeutic, or diagnostic use in humans or animals. Not for animal or human consumption.

Note

Purchasers shall not, and agree not to enable third parties to, analyze, copy, reverse engineer or otherwise attempt to determine the structure or sequence of the product.

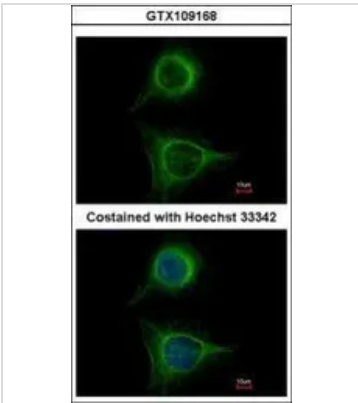
DATA IMAGES



GTX109168 IHC-P Image

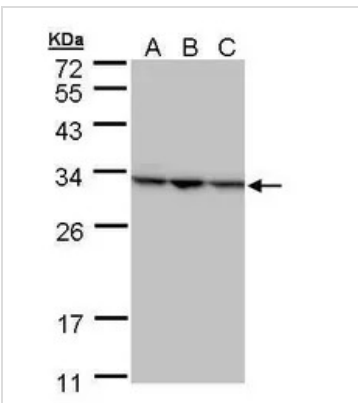
Immunohistochemical analysis of paraffin-embedded H1299 xenograft , using SBDS(GTX109168) antibody at 1:500 dilution.

Antigen Retrieval: Trilogy™ (EDTA based, pH 8.0) buffer, 15min



GTX109168 ICC/IF Image

Immunofluorescence analysis of methanol-fixed HeLa, using SBDS(GTX109168) antibody at 1:500 dilution.



GTX109168 WB Image

Sample (30 ug of whole cell lysate)

A: H1299

B: HeLa

C: Hep G2 (GTX27900)

12% SDS PAGE

GTX109168 diluted at 1:1000



For full product information, images and publications, please visit our [website](https://www.genetex.com).