

## SAR1B antibody

Cat. No. GTX109170

Host	Rabbit
Clonality	Polyclonal
Isotype	IgG
Applications	WB, ICC/IF, IHC-P
Reactivity	Human, Mouse, Rat

References ( 1 )

Package

100 µl, 25 µl

## Applications

## Application Note

\*Optimal dilutions/concentrations should be determined by the researcher.

Suggested dilution	Recommended dilution
WB	1:500-1:3000
ICC/IF	1:100-1:1000
IHC-P	1:100-1:1000

Not tested in other applications.

Calculated MW 22 kDa. ( [Note](#) )

## Properties

Form	Liquid
Buffer	0.1M Tris, 0.1M Glycine, 10% Glycerol
Preservative	0.01% Thimerosal
Storage	Store as concentrated solution. Centrifuge briefly prior to opening vial. For short-term storage (1-2 weeks), store at 4°C. For long-term storage, aliquot and store at -20°C or below. Avoid multiple freeze-thaw cycles.
Concentration	1 mg/ml (Please refer to the vial label for the specific concentration.)
Immunogen	Full length human SAR1B Recombinant protein.
Purification	Purified by antigen-affinity chromatography.
Conjugation	Unconjugated

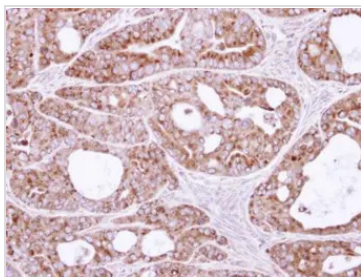
## Note

For laboratory research use only. Not for any clinical, therapeutic, or diagnostic use in humans or animals. Not for animal or human consumption.

Purchasers shall not, and agree not to enable third parties to, analyze, copy, reverse engineer or otherwise attempt to determine the structure or sequence of the product.

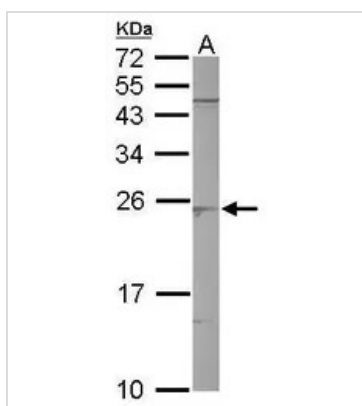


For full product information, images and publications, please visit our [website](#).

**DATA IMAGES**

**GTX109170 IHC-P Image**

Immunohistochemical analysis of paraffin-embedded NCIN87 xenograft, using GTBPB(GTX109170) antibody at 1:500 dilution.

Antigen Retrieval: Citrate buffer, pH 6.0, 15 min


**GTX109170 WB Image**

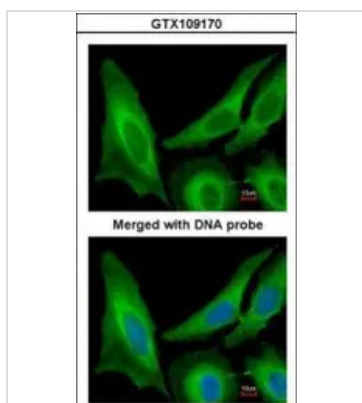
Sample (50 µg of whole cell lysate)

A: mouse brain

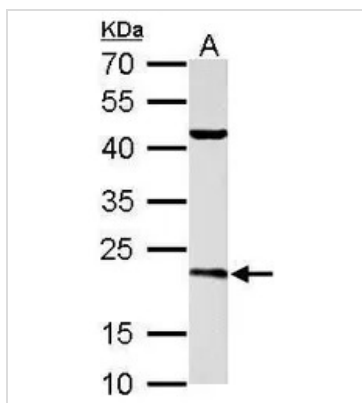
12% SDS PAGE

GTX109170 diluted at 1:3000

The HRP-conjugated anti-rabbit IgG antibody (GTX213110-01) was used to detect the primary antibody.


**GTX109170 ICC/IF Image**

Immunofluorescence analysis of paraformaldehyde-fixed HeLa, using GTBPB(GTX109170) antibody at 1:200 dilution.


**GTX109170 WB Image**

SAR1B antibody detects SAR1B protein by western blot analysis.

A. 50 µg rat brain lysate/extract

12% SDS-PAGE

SAR1B antibody (GTX109170) dilution: 1:3000

The HRP-conjugated anti-rabbit IgG antibody (GTX213110-01) was used to detect the primary antibody.



For full product information, images and publications, please visit our [website](https://www.genetex.com).