

## RAB27A antibody [N1C3]

Cat. No. GTX109180

Host	Rabbit
Clonality	Polyclonal
Isotype	IgG
Application	WB, IHC-P
Reactivity	Human

Reference ( 2 )

★★★★★ Review ( 1 )

Package

100 µl, 25 µl

## APPLICATION

## Application Note

\*Optimal dilutions/concentrations should be determined by the researcher.

Suggested dilution	Recommended dilution
WB	Assay dependent
IHC-P	Assay dependent

Not tested in other applications.

Calculated MW 25 kDa. ( [Note](#) )

**Product Note** Knockout/Knockdown validation was supported by customer review data.  
Knockdown/Knockout validation was supported by customer review data.

## PROPERTIES

Form	Liquid
Buffer	0.1M Tris, 0.1M Glycine, 10% Glycerol
Preservative	0.01% Thimerosal
Storage	Store as concentrated solution. Centrifuge briefly prior to opening vial. For short-term storage (1-2 weeks), store at 4°C. For long-term storage, aliquot and store at -20°C or below. Avoid multiple freeze-thaw cycles.
Concentration	1 mg/ml (Please refer to the vial label for the specific concentration.)
Immunogen	Full length human RAB27A Recombinant protein.
Purification	Purified by antigen-affinity chromatography.
Conjugation	Unconjugated

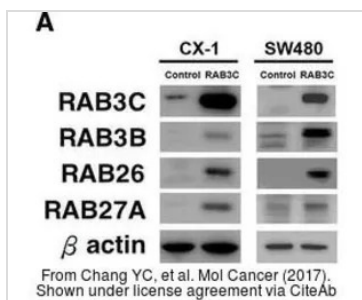
## Note

For laboratory research use only. Not for any clinical, therapeutic, or diagnostic use in humans or animals. Not for animal or human consumption.

Purchasers shall not, and agree not to enable third parties to, analyze, copy, reverse engineer or otherwise attempt to determine the structure or sequence of the product.



For full product information, images and publications, please visit our [website](#).

**DATA IMAGES**

**GTx109180 WB Image**

The data was published in the journal Mol Cancer in 2017. [PMID: 28784136](https://pubmed.ncbi.nlm.nih.gov/28784136/)



For full product information, images and publications, please visit our [website](https://www.genetex.com).