

## EN2 antibody

**Cat. No. GTX109198**

<b>Host</b>	Rabbit
<b>Clonality</b>	Polyclonal
<b>Isotype</b>	IgG
<b>Applications</b>	WB, IP
<b>Reactivity</b>	Human

**References** ( 1 )

**Package**

100 µl, 25 µl

### Applications

#### Application Note

\*Optimal dilutions/concentrations should be determined by the researcher.

Suggested dilution	Recommended dilution
WB	1:5000-1:20000
IP	1:100-1:500

Not tested in other applications.

**Calculated MW** 34 kDa. ( [Note](#) )

### Properties

<b>Form</b>	Liquid
<b>Buffer</b>	PBS, 1% BSA, 20% Glycerol
<b>Preservative</b>	0.01% Thimerosal
<b>Storage</b>	Store as concentrated solution. Centrifuge briefly prior to opening vial. For short-term storage (1-2 weeks), store at 4°C. For long-term storage, aliquot and store at -20°C or below. Avoid multiple freeze-thaw cycles.
<b>Concentration</b>	1 mg/ml (Please refer to the vial label for the specific concentration.)
<b>Immunogen</b>	Full length human EN2 Recombinant protein.
<b>Purification</b>	Purified by antigen-affinity chromatography.
<b>Conjugation</b>	Unconjugated

#### Note

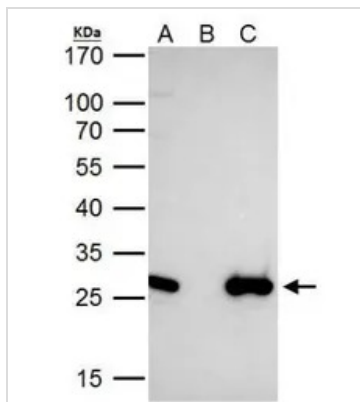
For laboratory research use only. Not for any clinical, therapeutic, or diagnostic use in humans or animals. Not for animal or human consumption.

Purchasers shall not, and agree not to enable third parties to, analyze, copy, reverse engineer or otherwise attempt to determine the structure or sequence of the product.



For full product information, images and publications, please visit our [website](#).

## DATA IMAGES

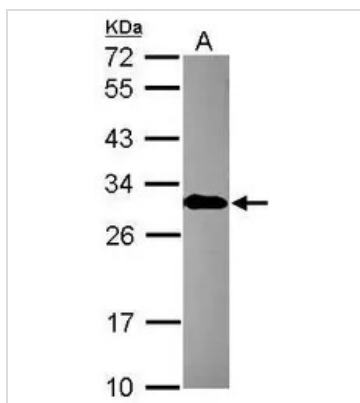


### GTX109198 IP Image

EN2 antibody immunoprecipitates EN2 protein in IP experiments. IP Sample: HeLa whole cell lysate/extract

A. 40  $\mu$ g HeLa whole cell lysate/extract B. Control with 2  $\mu$ g of preimmune rabbit IgG C.

Immunoprecipitation of EN2 protein by 2  $\mu$ g of EN2 antibody (GTX109198) 12% SDS-PAGE The immunoprecipitated EN2 protein was detected by EN2 antibody (GTX109198) diluted at 1:1000. EasyBlot anti-rabbit IgG (GTX221666-01) was used as a secondary reagent.



### GTX109198 WB Image

Sample (30  $\mu$ g of whole cell lysate)

A: MCF-7

12% SDS PAGE

GTX109198 diluted at 1:10000



For full product information, images and publications, please visit our [website](https://www.genetex.com).