

Leptin antibody

Cat. No. GTX109204

Host	Rabbit
Clonality	Polyclonal
Isotype	IgG
Applications	WB, IHC-P
Reactivity	Human, Mouse

References (3)

Package

100 µl, 25 µl

Applications

Application Note

*Optimal dilutions/concentrations should be determined by the researcher.

Suggested dilution	Recommended dilution
WB	1:500-1:3000
IHC-P	1:100-1:1000

Not tested in other applications.

Calculated MW 19 kDa. ([Note](#))

Properties

Form	Liquid
Buffer	PBS, 20% Glycerol
Preservative	0.025% ProClin 300
Storage	Store as concentrated solution. Centrifuge briefly prior to opening vial. For short-term storage (1-2 weeks), store at 4°C. For long-term storage, aliquot and store at -20°C or below. Avoid multiple freeze-thaw cycles.
Concentration	1.01 mg/ml (Please refer to the vial label for the specific concentration.)
Immunogen	Full length human Leptin Recombinant protein.
Purification	Purified by antigen-affinity chromatography.
Conjugation	Unconjugated

Note

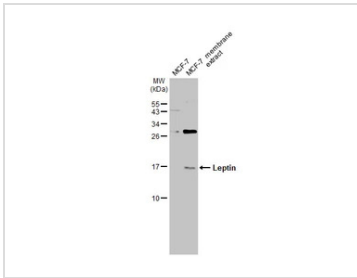
For laboratory research use only. Not for any clinical, therapeutic, or diagnostic use in humans or animals. Not for animal or human consumption.

Purchasers shall not, and agree not to enable third parties to, analyze, copy, reverse engineer or otherwise attempt to determine the structure or sequence of the product.



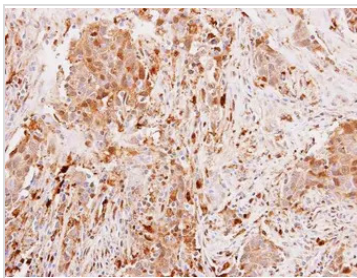
For full product information, images and publications, please visit our [website](#).

DATA IMAGES



GTX109204 WB Image

MCF-7 whole cell and membrane extracts (30 µg) were separated by 15% SDS-PAGE, and the membrane was blotted with Leptin antibody (GTX109204) diluted at 1:1000. The HRP-conjugated anti-rabbit IgG antibody (GTX213110-01) was used to detect the primary antibody.



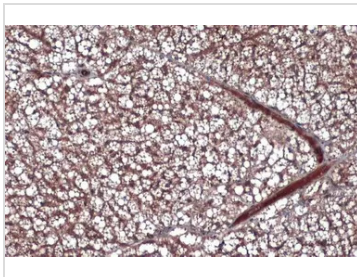
GTX109204 IHC-P Image

Leptin antibody detects Leptin protein at secreted on human lung papillary adenocarcinoma by immunohistochemical analysis.

Sample: Paraffin-embedded human lung papillary adenocarcinoma.

Leptin antibody (GTX109204) diluted at 1:250.

Antigen Retrieval: Trilogy™ (EDTA based, pH 8.0) buffer, 15min



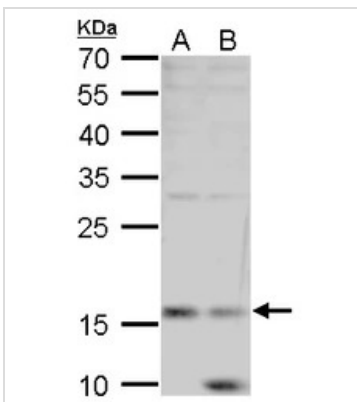
GTX109204 IHC-P Image

Leptin antibody detects Leptin protein at cytoplasm by immunohistochemical analysis.

Sample: Paraffin-embedded mouse adrenal gland.

Leptin stained by Leptin antibody (GTX109204) diluted at 1:500.

Antigen Retrieval: Citrate buffer, pH 6.0, 15 min



GTX109204 WB Image

Leptin antibody detects Leptin protein by Western blot analysis.

A. 30 µg MCF-7 whole cell lysate/extract

B. 30 µg MDA-MB-231 whole cell lysate/extract

12 % SDS-PAGE

Leptin antibody (GTX109204) dilution: 1:1000



For full product information, images and publications, please visit our [website](http://www.genetex.com).