

beta A3 Crystallin antibody [N1C3]

Cat. No. GTX109207

| | |
|---------------------|------------|
| Host | Rabbit |
| Clonality | Polyclonal |
| Isotype | IgG |
| Applications | WB |
| Reactivity | Mouse |

Package
100 µl, 25 µl

Applications

Application Note

*Optimal dilutions/concentrations should be determined by the researcher.

| Suggested dilution | Recommended dilution |
|--------------------|----------------------|
| WB | 1:500-1:3000 |

Not tested in other applications.

Calculated MW 25 kDa. ([Note](#))

Properties

| | |
|----------------------|--|
| Form | Liquid |
| Buffer | 0.1M Tris, 0.1M Glycine, 10% Glycerol |
| Preservative | 0.01% Thimerosal |
| Storage | Store as concentrated solution. Centrifuge briefly prior to opening vial. For short-term storage (1-2 weeks), store at 4°C. For long-term storage, aliquot and store at -20°C or below. Avoid multiple freeze-thaw cycles. |
| Concentration | 0.26 mg/ml (Please refer to the vial label for the specific concentration.) |
| Immunogen | Full length human beta A3 Crystallin Recombinant protein. |
| Purification | Purified by antigen-affinity chromatography. |
| Conjugation | Unconjugated |

Note

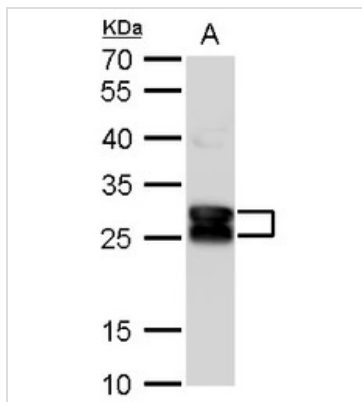
For laboratory research use only. Not for any clinical, therapeutic, or diagnostic use in humans or animals. Not for animal or human consumption.

Purchasers shall not, and agree not to enable third parties to, analyze, copy, reverse engineer or otherwise attempt to determine the structure or sequence of the product.



For full product information, images and publications, please visit our [website](#).

DATA IMAGES



GTX109207 WB Image

beta A3 Crystallin antibody detects beta A3 Crystallin protein by western blot analysis.

A. 50 µg mouse fetal eye lysate/extract

12 % SDS-PAGE

beta A3 Crystallin antibody (GTX109207) dilution: 1:10000



For full product information, images and publications, please visit our [website](#).