

SUCLG1 antibody

Cat. No. GTX109215

Host	Rabbit
Clonality	Polyclonal
Isotype	IgG
Applications	WB, ICC/IF, IHC-P, IP
Reactivity	Human, Mouse, Rat

References (2)

Package

100 µl, 25 µl

Applications

Application Note

*Optimal dilutions/concentrations should be determined by the researcher.

Suggested dilution	Recommended dilution
WB	1:1000-1:10000
ICC/IF	1:100-1:1000
IHC-P	1:100-1:1000
IP	Assay dependent

Not tested in other applications.

Calculated MW 36 kDa. ([Note](#))

Product Note KO/KD validation is based on published data (PMID: 26990993).

Properties

Form	Liquid
Buffer	PBS, 20% Glycerol
Preservative	0.025% ProClin 300
Storage	Store as concentrated solution. Centrifuge briefly prior to opening vial. For short-term storage (1-2 weeks), store at 4°C. For long-term storage, aliquot and store at -20°C or below. Avoid multiple freeze-thaw cycles.
Concentration	1.48 mg/ml (Please refer to the vial label for the specific concentration.)
Immunogen	Full length human SUCLG1 Recombinant protein.
Purification	Purified by antigen-affinity chromatography.
Conjugation	Unconjugated



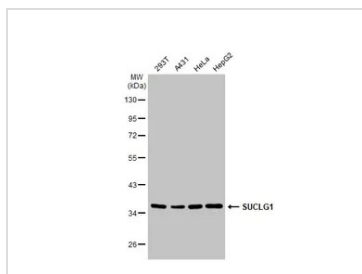
For full product information, images and publications, please visit our [website](#).

For laboratory research use only. Not for any clinical, therapeutic, or diagnostic use in humans or animals. Not for animal or human consumption.

Note

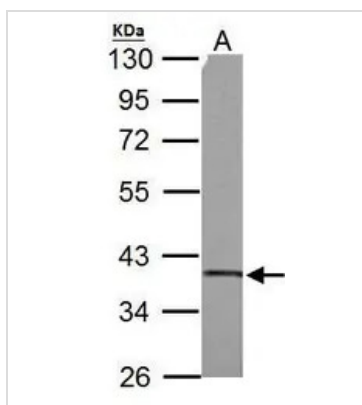
Purchasers shall not, and agree not to enable third parties to, analyze, copy, reverse engineer or otherwise attempt to determine the structure or sequence of the product.

DATA IMAGES



GTx109215 WB Image

Various whole cell extracts (30 µg) were separated by 10% SDS-PAGE, and the membrane was blotted with SUCLG1 antibody (GTx109215) diluted at 1:1000. The HRP-conjugated anti-rabbit IgG antibody (GTx213110-01) was used to detect the primary antibody.



GTx109215 WB Image

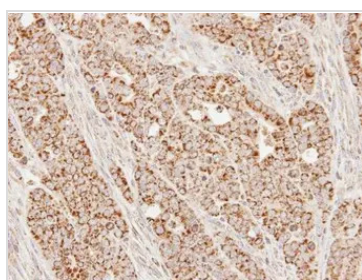
SUCLG1 antibody detects SUCLG1 protein by western blot analysis.

A. 50 µg rat brain lysate/extract

10% SDS-PAGE

SUCLG1 antibody (GTx109215) dilution: 1:3000

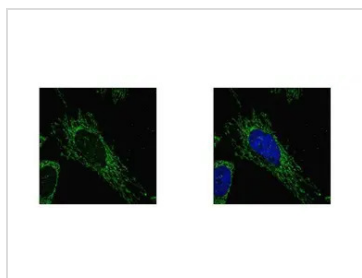
The HRP-conjugated anti-rabbit IgG antibody (GTx213110-01) was used to detect the primary antibody.



GTx109215 IHC-P Image

Immunohistochemical analysis of paraffin-embedded N87 xenograft, using SUCLG1 (GTx109215) antibody at 1:100 dilution.

Antigen Retrieval: Trilogy™ (EDTA based, pH 8.0) buffer, 15min



GTx109215 ICC/IF Image

SUCLG1 antibody detects SUCLG1 protein at mitochondria by confocal immunofluorescent analysis.

Sample: HeLa cells were fixed in 2% paraformaldehyde/culture medium at 37°C for 30 min.

Green: SUCLG1 protein stained by SUCLG1 antibody (GTx109215) diluted at 1:500.

Blue: Hoechst 33342 staining.

[Images captured by Olympus FV10i Confocal Laser Scanning Microscope]



For full product information, images and publications, please visit our [website](https://www.genetex.com).