

# Arginase 1 antibody

**Cat. No. GTX109242**

<b>Host</b>	Rabbit
<b>Clonality</b>	Polyclonal
<b>Isotype</b>	IgG
<b>Applications</b>	WB, ICC/IF, IHC-P, IHC-Fr, FCM, IP, ELISA, Sandwich ELISA
<b>Reactivity</b>	Human, Mouse, Rat

References ( 88 )

★★★★☆ Review ( 2 )

Package

100 µl, 25 µl

## Applications

### Application Note

\*Optimal dilutions/concentrations should be determined by the researcher.

Suggested dilution	Recommended dilution
WB	1:500-1:3000
ICC/IF	1:100-1:1000
IHC-P	1:100-1:1000
IHC-Fr	1:100-1:1000
FCM	1:50-1:200
IP	1:100-1:1000
ELISA	1:1000-1:10000
Sandwich ELISA	Assay dependent

**Note : Capture : GTX634218 / GTX109242, Detection : GTX109242 / GTX634218**

Not tested in other applications.

**Calculated MW** 35 kDa. ( [Note](#) )

## Properties

<b>Form</b>	Liquid
<b>Buffer</b>	PBS, 20% Glycerol
<b>Preservative</b>	0.025% ProClin 300
<b>Storage</b>	Store as concentrated solution. Centrifuge briefly prior to opening vial. For short-term storage (1-2 weeks), store at 4°C. For long-term storage, aliquot and store at -20°C or below. Avoid multiple freeze-thaw cycles.
<b>Concentration</b>	0.72 mg/ml (Please refer to the vial label for the specific concentration.)
<b>Immunogen</b>	Full length human Arginase 1 Recombinant protein.
<b>Purification</b>	Purified by antigen-affinity chromatography.



For full product information, images and publications, please visit our [website](#).

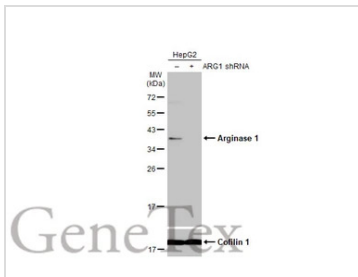
**Conjugation**

Unconjugated

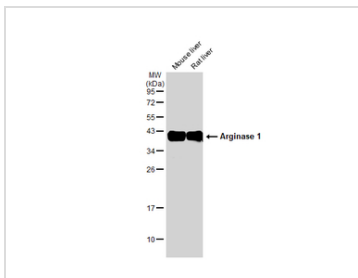
**Note**

For laboratory research use only. Not for any clinical, therapeutic, or diagnostic use in humans or animals. Not for animal or human consumption.

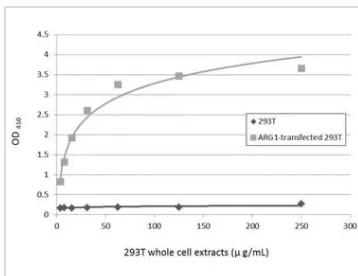
Purchasers shall not, and agree not to enable third parties to, analyze, copy, reverse engineer or otherwise attempt to determine the structure or sequence of the product.

**DATA IMAGES**

**GTx109242 WB Image**

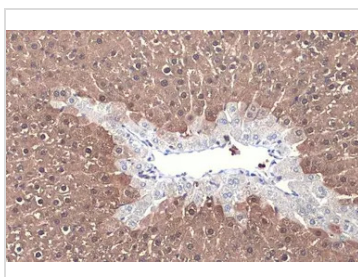
Non-transfected (–) and transfected (+) HepG2 whole cell extracts (30 µg) were separated by 12% SDS-PAGE, and the membrane was blotted with Arginase 1 antibody (GTx109242) diluted at 1:500. The HRP-conjugated anti-rabbit IgG antibody (GTx213110-01) was used to detect the primary antibody.


**GTx109242 WB Image**

Various tissue extracts (50 µg) were separated by 12% SDS-PAGE, and the membrane was blotted with Arginase 1 antibody (GTx109242) diluted at 1:1000. The HRP-conjugated anti-rabbit IgG antibody (GTx213110-01) was used to detect the primary antibody.


**GTx109242 ELISA Image**

Sandwich ELISA detection of non-transfected and transfected 293T whole cell extracts using GTx634218 as capture antibody at concentration of 5 µg/mL and GTx109242 as detection antibody at concentration of 1 µg/mL. Rabbit IgG antibody (HRP) (GTx213110-01) was diluted at 1:10000 and used to detect the primary antibody.


**GTx109242 IHC-P Image**

Arginase 1 antibody detects Arginase 1 protein at cytoplasm by immunohistochemical analysis.

Sample: Paraffin-embedded mouse liver.

Arginase 1 stained by Arginase 1 antibody (GTx109242) diluted at 1:500.

Antigen Retrieval: Citrate buffer, pH 6.0, 15 min



For full product information, images and publications, please visit our [website](http://www.genetex.com).