

## NHP2L1 antibody [N1C3]

**Cat. No. GTX109247**

<b>Host</b>	Rabbit
<b>Clonality</b>	Polyclonal
<b>Isotype</b>	IgG
<b>Applications</b>	WB, ICC/IF, IHC-P, IHC-Wm
<b>Reactivity</b>	Human, Mouse, Rat, Zebrafish

**Package**  
100 µl, 25 µl

## Applications

**Application Note**

\*Optimal dilutions/concentrations should be determined by the researcher.

Suggested dilution	Recommended dilution
WB	1:500-1:3000
ICC/IF	1:100-1:1000
IHC-P	1:100-1:1000
IHC-Wm	Assay dependent

Not tested in other applications.

**Calculated MW** 14 kDa. ([Note](#))

## Properties

<b>Form</b>	Liquid
<b>Buffer</b>	0.1M Tris, 0.1M Glycine, 10% Glycerol
<b>Preservative</b>	0.01% Thimerosal
<b>Storage</b>	Store as concentrated solution. Centrifuge briefly prior to opening vial. For short-term storage (1-2 weeks), store at 4°C. For long-term storage, aliquot and store at -20°C or below. Avoid multiple freeze-thaw cycles.
<b>Concentration</b>	1 mg/ml (Please refer to the vial label for the specific concentration.)
<b>Immunogen</b>	Full length human NHP2L1 Recombinant protein.
<b>Purification</b>	Purified by antigen-affinity chromatography.
<b>Conjugation</b>	Unconjugated

**Note**

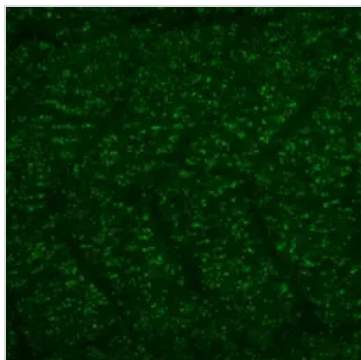
For laboratory research use only. Not for any clinical, therapeutic, or diagnostic use in humans or animals. Not for animal or human consumption.

Purchasers shall not, and agree not to enable third parties to, analyze, copy, reverse engineer or otherwise attempt to determine the structure or sequence of the product.



For full product information, images and publications, please visit our [website](#).

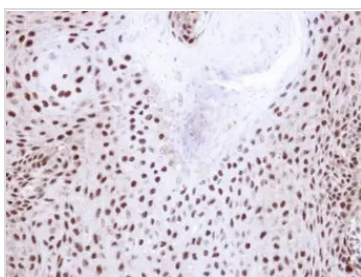
## DATA IMAGES

**GTX109247 IHC-Wm Image**

NHP2L1 antibody [N1C3] detects Nhp2l1 protein at nucleoli on whole-mount zebrafish embryos by immunohistochemical analysis.

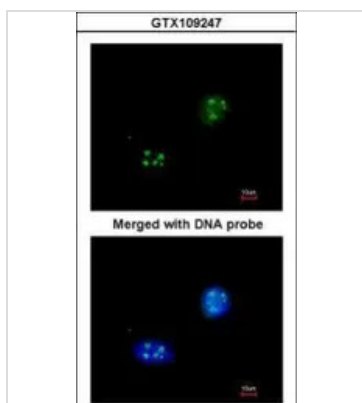
Sample: Paraformaldehyde-fixed zebrafish embryos.

NHP2L1 antibody [N1C3] (GTX109247) dilution: 1:200.

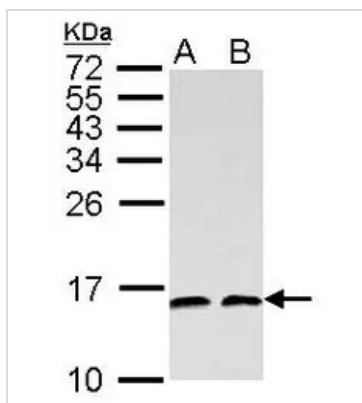
**GTX109247 IHC-P Image**

Immunohistochemical analysis of paraffin-embedded Cal27 xenograft, using NHP2-like protein 1 (GTX109247) antibody at 1:100 dilution.

Antigen Retrieval: Trilogy™ (EDTA based, pH 8.0) buffer, 15min

**GTX109247 ICC/IF Image**

Immunofluorescence analysis of paraformaldehyde-fixed HeLa, using NHP2-like protein 1 (GTX109247) antibody at 1:200 dilution.

**GTX109247 WB Image**

NHP2L1 antibody detects NHP2L1 protein by Western blot analysis.

A. 30  $\mu$ g PC-12 whole cell lysate/extract

B. 30  $\mu$ g Rat2 whole cell lysate/extract

15 % SDS-PAGE

NHP2L1 antibody (GTX109247) dilution: 1:1000



For full product information, images and publications, please visit our [website](#).