

GSTT1 antibody

Cat. No. GTX109250

Host	Rabbit
Clonality	Polyclonal
Isotype	IgG
Applications	WB, IHC-P, IP
Reactivity	Human, Mouse, Rat

References (1)

Package

100 µl, 25 µl

Applications

Application Note

*Optimal dilutions/concentrations should be determined by the researcher.

Suggested dilution	Recommended dilution
WB	1:500-1:3000
IHC-P	1:100-1:1000
IP	1:100-1:500

Not tested in other applications.

Calculated MW 27 kDa. ([Note](#))

Product Note KO/KD validation is based on published data (PMID: 30446643).

Properties

Form	Liquid
Buffer	PBS, 20% Glycerol
Preservative	0.025% ProClin 300
Storage	Store as concentrated solution. Centrifuge briefly prior to opening vial. For short-term storage (1-2 weeks), store at 4°C. For long-term storage, aliquot and store at -20°C or below. Avoid multiple freeze-thaw cycles.
Concentration	1 mg/ml (Please refer to the vial label for the specific concentration.)
Immunogen	Full length human GSTT1 Recombinant protein.
Purification	Purified by antigen-affinity chromatography.
Conjugation	Unconjugated

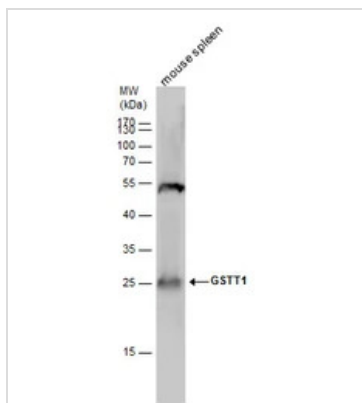


For full product information, images and publications, please visit our [website](#).

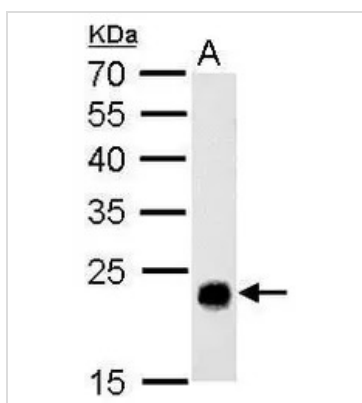
For laboratory research use only. Not for any clinical, therapeutic, or diagnostic use in humans or animals. Not for animal or human consumption.

Note

Purchasers shall not, and agree not to enable third parties to, analyze, copy, reverse engineer or otherwise attempt to determine the structure or sequence of the product.

DATA IMAGES

GTX109250 WB Image

GSTT1 antibody detects GSTT1 protein by Western blot analysis. Mouse tissue extracts (50 µg) was separated by 12 % SDS-PAGE, and the membrane was blotted with GSTT1 antibody (GTX109250) diluted by 1:1000.


GTX109250 WB Image

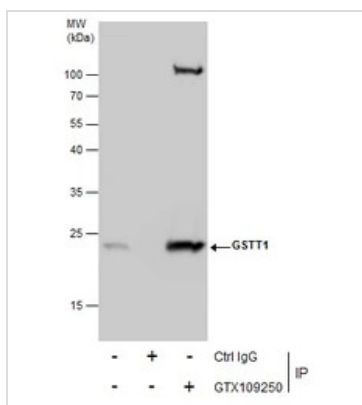
GSTT1 antibody detects GSTT1 protein by western blot analysis.

A. 50 µg rat liver lysate/extract

12% SDS-PAGE

GSTT1 antibody (GTX109250) dilution: 1:500

The HRP-conjugated anti-rabbit IgG antibody (GTX213110-01) was used to detect the primary antibody.


GTX109250 IP Image

Immunoprecipitation of GSTT1 protein from HepG2 whole cell extracts using 5 µg of GSTT1 antibody (GTX109250).

Western blot analysis was performed using GSTT1 antibody (GTX109250).

EasyBlot anti-Rabbit IgG (GTX221666-01) was used as a secondary reagent.



For full product information, images and publications, please visit our [website](https://www.genetex.com).