

## ANP antibody

Cat. No. GTX109255

Host	Rabbit
Clonality	Polyclonal
Isotype	IgG
Applications	WB, ICC/IF, IHC-P
Reactivity	Human, Mouse, Rat, Frog, Squirrel

References ( 15 )

Package

100 µl, 25 µl

## Applications

## Application Note

\*Optimal dilutions/concentrations should be determined by the researcher.

Suggested dilution	Recommended dilution
WB	1:1000-1:10000
ICC/IF	Assay dependent
IHC-P	1:100-1:1000

Not tested in other applications.

Calculated MW 17 kDa. ( [Note](#) )

## Properties

Form	Liquid
Buffer	PBS, 20% Glycerol
Preservative	0.025% ProClin 300
Storage	Store as concentrated solution. Centrifuge briefly prior to opening vial. For short-term storage (1-2 weeks), store at 4°C. For long-term storage, aliquot and store at -20°C or below. Avoid multiple freeze-thaw cycles.
Concentration	1.46 mg/ml (Please refer to the vial label for the specific concentration.)
Immunogen	Full length human ANP Recombinant protein.
Purification	Purified by antigen-affinity chromatography.
Conjugation	Unconjugated

## Note

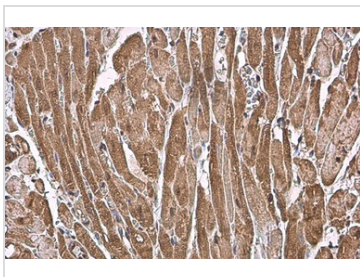
For laboratory research use only. Not for any clinical, therapeutic, or diagnostic use in humans or animals. Not for animal or human consumption.

Purchasers shall not, and agree not to enable third parties to, analyze, copy, reverse engineer or otherwise attempt to determine the structure or sequence of the product.



For full product information, images and publications, please visit our [website](#).

DATA IMAGES



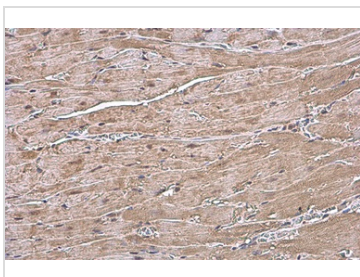
**GTX109255 IHC-P Image**

ANP antibody detects ANP protein at cytoplasm by immunohistochemical analysis.

Sample: Paraffin-embedded rat heart.

ANP stained by ANP antibody (GTX109255) diluted at 1:500.

Antigen Retrieval: Citrate buffer, pH 6.0, 15 min



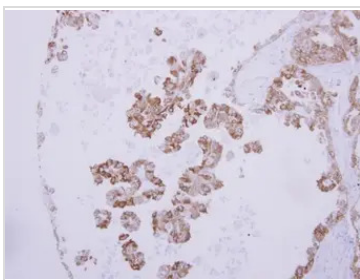
**GTX109255 IHC-P Image**

ANP antibody detects ANP protein at cytoplasm by immunohistochemical analysis.

Sample: Paraffin-embedded mouse heart.

ANP stained by ANP antibody (GTX109255) diluted at 1:500.

Antigen Retrieval: Citrate buffer, pH 6.0, 15 min



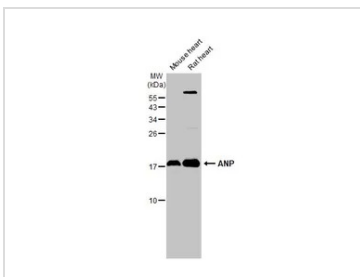
**GTX109255 IHC-P Image**

ANP antibody detects ANP protein at cytoplasm on human ovarian carcinoma by immunohistochemical analysis.

Sample: Paraffin-embedded ovarian carcinoma.

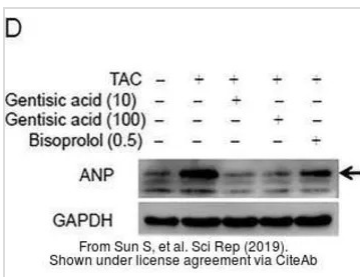
ANP antibody (GTX109255) dilution: 1:250.

Antigen Retrieval: Trilogy™ (EDTA based, pH 8.0) buffer, 15min



**GTX109255 WB Image**

Various tissue extracts (50 µg) were separated by 15% SDS-PAGE, and the membrane was blotted with ANP antibody (GTX109255) diluted at 1:2000. The HRP-conjugated anti-rabbit IgG antibody (GTX213110-01) was used to detect the primary antibody.



**GTX109255 WB Image**

The data was published in the journal Sci Rep in 2019. [PMID: 30816171](https://pubmed.ncbi.nlm.nih.gov/30816171/)



For full product information, images and publications, please visit our [website](https://www.genetex.com).