

Human ANP protein, GST tag

Cat. No. GTX109255-pro

Applications ELISA, Sandwich ELISA

Species Human

Package

100 µg, 25 µg

Applications

Application Note

Recommended antibody pairs for sandwich ELISA:

Capture: GTX634219, Detection: GTX639071

Properties

Form Liquid

Buffer PBS, 0.1% SDS

Preservative No preservatives

Storage Store as concentrated solution. Centrifuge briefly prior to opening vial. Aliquot and store at -20°C or below. Avoid multiple freeze-thaw cycles.

Concentration Batch dependent (Please refer to the vial label for the specific concentration.)

Region/Sequence N-terminal GST tagged full length protein of NP_006163

Expression System E. coli

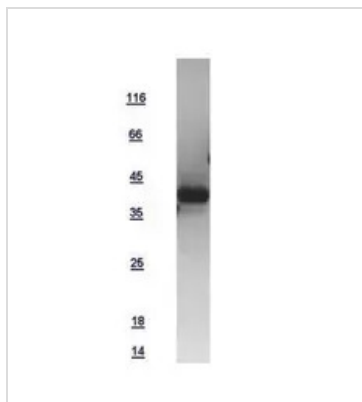
Purity >95%

Conjugation Unconjugated

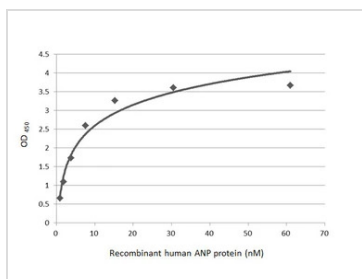
Note For In vitro laboratory use only. Not for any clinical, therapeutic, or diagnostic use in humans or animals. Not for animal or human consumption.



For full product information, images and publications, please visit our [website](#).

DATA IMAGES

GTX109255-pro Image

10µg of GTX109255-pro ANP recombinant protein analyzed using SDS-PAGE and stained with coomassie blue and captured by black and white camera.


GTX109255-pro ELISA Image

Sandwich ELISA detection of recombinant Human ANP protein, GST tag (GTX109255-pro) using antibodies as below.

Capture: ANP antibody [GT1068] (GTX634219) (5 µg/mL)

Detection: ANP antibody [HL2617] (GTX639071) (1 µg/mL)



For full product information, images and publications, please visit our [website](https://www.genetex.com).