

UBE2D1 antibody

Cat. No. GTX109257

Host	Rabbit
Clonality	Polyclonal
Isotype	IgG
Applications	WB, ICC/IF, IHC-P
Reactivity	Human, Mouse

Package
100 µl, 25 µl

Applications

Application Note

*Optimal dilutions/concentrations should be determined by the researcher.

Suggested dilution	Recommended dilution
WB	1:500-1:3000
ICC/IF	1:100-1:1000
IHC-P	1:100-1:1000

Not tested in other applications.

Calculated MW 17 kDa. ([Note](#))

Properties

Form	Liquid
Buffer	0.1M Tris, 0.1M Glycine, 10% Glycerol
Preservative	0.01% Thimerosal
Storage	Store as concentrated solution. Centrifuge briefly prior to opening vial. For short-term storage (1-2 weeks), store at 4°C. For long-term storage, aliquot and store at -20°C or below. Avoid multiple freeze-thaw cycles.
Concentration	1 mg/ml (Please refer to the vial label for the specific concentration.)
Immunogen	Full length human UBE2D1 Recombinant protein.
Purification	Purified by antigen-affinity chromatography.
Conjugation	Unconjugated

Note

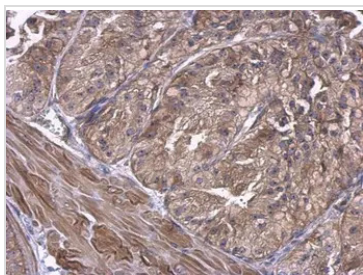
For laboratory research use only. Not for any clinical, therapeutic, or diagnostic use in humans or animals. Not for animal or human consumption.

Purchasers shall not, and agree not to enable third parties to, analyze, copy, reverse engineer or otherwise attempt to determine the structure or sequence of the product.



For full product information, images and publications, please visit our [website](#).

DATA IMAGES

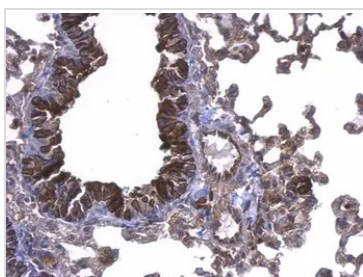
**GTX109257 IHC-P Image**

UBE2D1 antibody detects UBE2D1 protein at cytosol on mouse prostate by immunohistochemical analysis.

Sample: Paraffin-embedded mouse prostate.

UBE2D1 antibody (GTX109257) dilution: 1:500.

Antigen Retrieval: Trilogy™ (EDTA based, pH 8.0) buffer, 15min

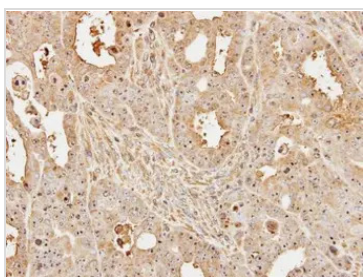
**GTX109257 IHC-P Image**

UBE2D1 antibody detects UBE2D1 protein at cytosol on mouse lung by immunohistochemical analysis.

Sample: Paraffin-embedded mouse lung.

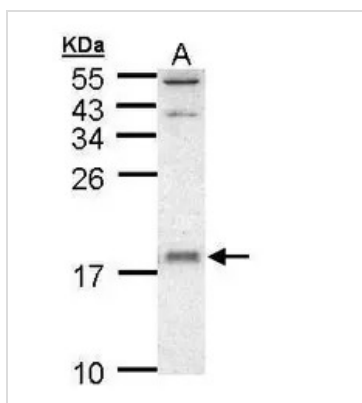
UBE2D1 antibody (GTX109257) dilution: 1:500.

Antigen Retrieval: Trilogy™ (EDTA based, pH 8.0) buffer, 15min

**GTX109257 IHC-P Image**

Immunohistochemical analysis of paraffin-embedded TOV-112D xenograft, using UBE2D1(GTX109257) antibody at 1:500 dilution.

Antigen Retrieval: Trilogy™ (EDTA based, pH 8.0) buffer, 15min

**GTX109257 WB Image**

Sample (30 ug of whole cell lysate)

A: A431

10% SDS PAGE

GTX109257 diluted at 1:1000



For full product information, images and publications, please visit our [website](#).