

## MKP4 antibody [C2C3], C-term

**Cat. No. GTX109288**

<b>Host</b>	Rabbit
<b>Clonality</b>	Polyclonal
<b>Isotype</b>	IgG
<b>Applications</b>	WB, ICC/IF, IHC-P
<b>Reactivity</b>	Human

**Package**  
100 µl, 25 µl

## Applications

**Application Note**

\*Optimal dilutions/concentrations should be determined by the researcher.

Suggested dilution	Recommended dilution
WB	1:500-1:3000
ICC/IF	1:100-1:1000
IHC-P	1:100-1:1000

Not tested in other applications.

**Calculated MW** 42 kDa. ([Note](#))

## Properties

<b>Form</b>	Liquid
<b>Buffer</b>	0.1M Tris, 0.1M Glycine, 10% Glycerol
<b>Preservative</b>	0.01% Thimerosal
<b>Storage</b>	Store as concentrated solution. Centrifuge briefly prior to opening vial. For short-term storage (1-2 weeks), store at 4°C. For long-term storage, aliquot and store at -20°C or below. Avoid multiple freeze-thaw cycles.
<b>Concentration</b>	1 mg/ml (Please refer to the vial label for the specific concentration.)
<b>Immunogen</b>	Carrier-protein conjugated synthetic peptide encompassing a sequence within the C-terminus region of human MKP4. The exact sequence is proprietary.
<b>Purification</b>	Purified by antigen-affinity chromatography.
<b>Conjugation</b>	Unconjugated

**Note**

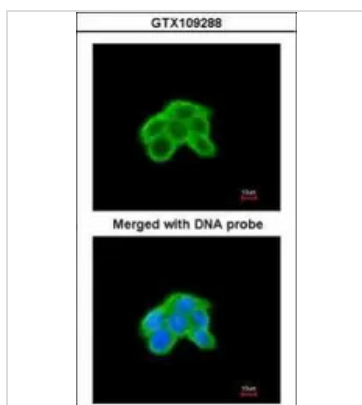
For laboratory research use only. Not for any clinical, therapeutic, or diagnostic use in humans or animals. Not for animal or human consumption.

Purchasers shall not, and agree not to enable third parties to, analyze, copy, reverse engineer or otherwise attempt to determine the structure or sequence of the product.

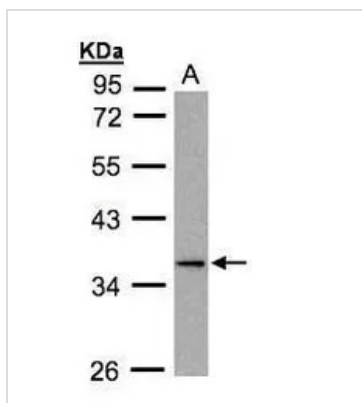


For full product information, images and publications, please visit our [website](#).

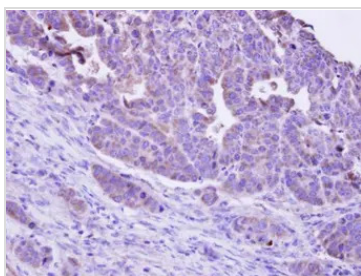
## DATA IMAGES

**GTX109288 ICC/IF Image**

Immunofluorescence analysis of paraformaldehyde-fixed A431, using MKP-4 (GTX109288) antibody at 1:200 dilution.

**GTX109288 WB Image**

Sample(30 ug whole cell lysate)  
A:A431(GTX27909)  
10% SDS PAGE  
GTX109288 diluted at 1:1000

**GTX109288 IHC-P Image**

Immunohistochemical analysis of paraffin-embedded NCIN87 xenograft, using MKP-4 (GTX109288) antibody at 1:100 dilution.  
Antigen Retrieval: Citrate buffer, pH 6.0, 15 min



For full product information, images and publications, please visit our [website](#).