

KHS antibody [N3C1], Internal

Cat. No. GTX109297

Host	Rabbit
Clonality	Polyclonal
Isotype	IgG
Applications	WB, ICC/IF, IHC-P, IP
Reactivity	Human

Package
100 µl, 25 µl

Applications

Application Note

*Optimal dilutions/concentrations should be determined by the researcher.

Suggested dilution	Recommended dilution
WB	1:1000-1:10000
ICC/IF	1:100-1:1000
IHC-P	1:100-1:1000
IP	1:100-1:500

Not tested in other applications.

Calculated MW 95 kDa. ([Note](#))

Properties

Form	Liquid
Buffer	0.1M Tris, 0.1M Glycine, 10% Glycerol
Preservative	0.01% Thimerosal
Storage	Store as concentrated solution. Centrifuge briefly prior to opening vial. For short-term storage (1-2 weeks), store at 4°C. For long-term storage, aliquot and store at -20°C or below. Avoid multiple freeze-thaw cycles.
Concentration	1 mg/ml (Please refer to the vial label for the specific concentration.)
Immunogen	Carrier-protein conjugated synthetic peptide encompassing a sequence within the center region of human KHS. The exact sequence is proprietary.
Purification	Purified by antigen-affinity chromatography.
Conjugation	Unconjugated



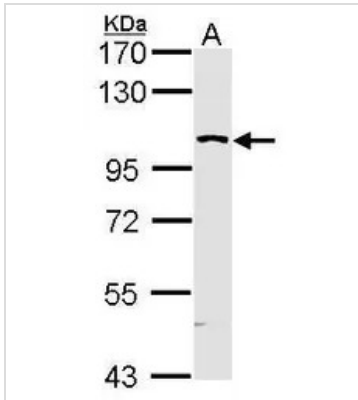
For full product information, images and publications, please visit our [website](#).

For laboratory research use only. Not for any clinical, therapeutic, or diagnostic use in humans or animals. Not for animal or human consumption.

Note

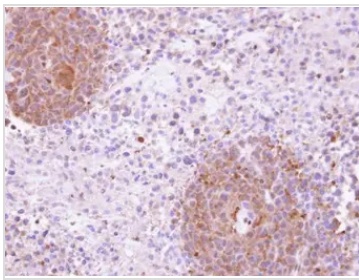
Purchasers shall not, and agree not to enable third parties to, analyze, copy, reverse engineer or otherwise attempt to determine the structure or sequence of the product.

DATA IMAGES



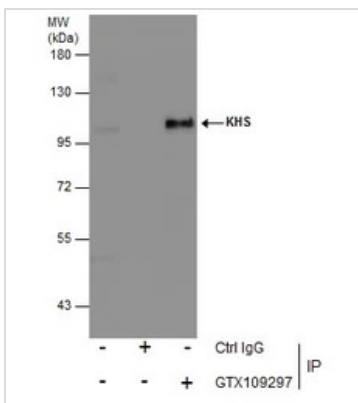
GTx109297 WB Image

Sample (30 ug of whole cell lysate)
 A: Molt-4 (GTx27912)
 12% SDS PAGE
 MAP4K5 antibody
 GTx109297 diluted at 1:5000



GTx109297 IHC-P Image

Immunohistochemical analysis of paraffin-embedded SAS xenograft, using KHS(GTx109297) antibody at 1:100 dilution.
 Antigen Retrieval: Citrate buffer, pH 6.0, 15 min



GTx109297 IP Image

Immunoprecipitation of KHS protein from 293T whole cell extracts using 5 µg of KHS antibody (GTx109297).
 Western blot analysis was performed using KHS antibody (GTx109297).
 EasyBlot anti-Rabbit IgG (GTx221666-01) was used as a secondary reagent.



For full product information, images and publications, please visit our [website](https://www.genetex.com).