

DNase I antibody [N1C3]

Cat. No. GTX109306

Host	Rabbit
Clonality	Polyclonal
Isotype	IgG
Applications	WB, ICC/IF, IHC-P
Reactivity	Human, Mouse, Monkey

References (2)

Package

100 µl, 25 µl

Applications

Application Note

*Optimal dilutions/concentrations should be determined by the researcher.

Suggested dilution	Recommended dilution
WB	1:500-1:3000
ICC/IF	1:100-1:1000
IHC-P	1:100-1:1000

Not tested in other applications.

Calculated MW 31 kDa. ([Note](#))

Properties

Form	Liquid
Buffer	PBS, 1% BSA, 20% Glycerol
Preservative	0.025% ProClin 300
Storage	Store as concentrated solution. Centrifuge briefly prior to opening vial. For short-term storage (1-2 weeks), store at 4°C. For long-term storage, aliquot and store at -20°C or below. Avoid multiple freeze-thaw cycles.
Concentration	0.28 mg/ml (Please refer to the vial label for the specific concentration.)
Immunogen	Recombinant protein corresponding to human DNase I.
Purification	Purified by antigen-affinity chromatography.
Conjugation	Unconjugated

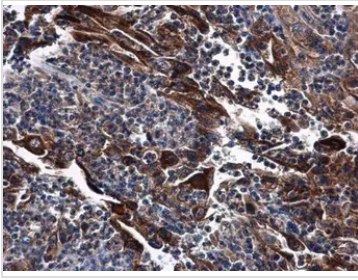
Note

For laboratory research use only. Not for any clinical, therapeutic, or diagnostic use in humans or animals. Not for animal or human consumption.

Purchasers shall not, and agree not to enable third parties to, analyze, copy, reverse engineer or otherwise attempt to determine the structure or sequence of the product.



For full product information, images and publications, please visit our [website](#).

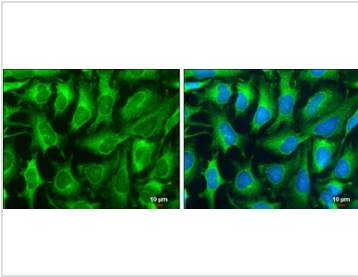
DATA IMAGES

GTx109306 IHC-P Image

DNase I antibody [N1C3] detects DNase I protein at cytoplasm in human endometrial carcinoma by immunohistochemical analysis.

Sample: Paraffin-embedded human endometrial carcinoma.

DNase I antibody [N1C3] (GTx109306) diluted at 1:500.

Antigen Retrieval: Citrate buffer, pH 6.0, 15 min


GTx109306 ICC/IF Image

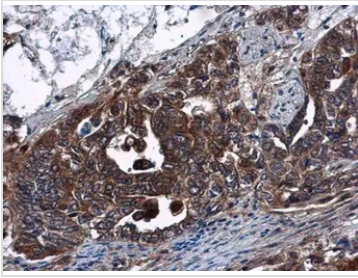
DNase I antibody [N1C3] detects DNase I protein at cytoplasm by immunofluorescent analysis.

Sample: HeLa cells were fixed in ice-cold MeOH for 5 min.

Green: DNase I protein stained by DNase I antibody [N1C3] (GTx109306) diluted at 1:200.

Blue: Hoechst 33342 staining.

Scale bar = 10 μ m.

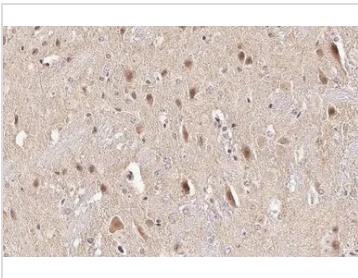

GTx109306 IHC-P Image

DNase I antibody [N1C3] detects DNase I protein at cytoplasm in human cervical carcinoma by immunohistochemical analysis.

Sample: Paraffin-embedded human cervical carcinoma.

DNase I antibody [N1C3] (GTx109306) diluted at 1:500.

Antigen Retrieval: Citrate buffer, pH 6.0, 15 min

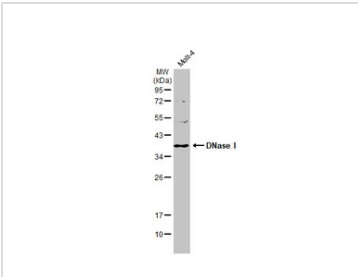

GTx109306 IHC-P Image

DNase I antibody [N1C3] detects DNase I protein at cytoplasm by immunohistochemical analysis.

Sample: Paraffin-embedded mouse brain.

DNase I stained by DNase I antibody [N1C3] (GTx109306) diluted at 1:500.

Antigen Retrieval: Citrate buffer, pH 6.0, 15 min


GTx109306 WB Image

Whole cell extract (30 μ g) was separated by 12% SDS-PAGE, and the membrane was blotted with DNase I antibody [N1C3] (GTx109306) diluted at 1:1000. The HRP-conjugated anti-rabbit IgG antibody (GTx213110-01) was used to detect the primary antibody.



For full product information, images and publications, please visit our [website](https://www.genetex.com).