

## Cardiac Troponin I antibody [N1C3]

Cat. No. GTX109331

<b>Host</b>	Rabbit
<b>Clonality</b>	Polyclonal
<b>Isotype</b>	IgG
<b>Applications</b>	WB, IHC-P
<b>Reactivity</b>	Human, Mouse, Rat

References ( 2 )

Package

100 µl, 25 µl

## Applications

## Application Note

\*Optimal dilutions/concentrations should be determined by the researcher.

Suggested dilution	Recommended dilution
WB	1:1000-1:10000
IHC-P	1:100-1:1000

Not tested in other applications.

Calculated MW 24 kDa. ( [Note](#) )

## Properties

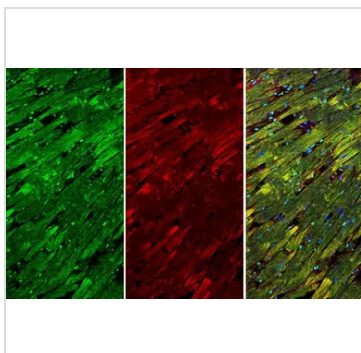
<b>Form</b>	Liquid
<b>Buffer</b>	PBS, 1% BSA, 20% Glycerol
<b>Preservative</b>	0.025% ProClin 300
<b>Storage</b>	Store as concentrated solution. Centrifuge briefly prior to opening vial. For short-term storage (1-2 weeks), store at 4°C. For long-term storage, aliquot and store at -20°C or below. Avoid multiple freeze-thaw cycles.
<b>Concentration</b>	0.05 mg/ml (Please refer to the vial label for the specific concentration.)
<b>Immunogen</b>	Full length human Cardiac Troponin I Recombinant protein.
<b>Purification</b>	Purified by antigen-affinity chromatography.
<b>Conjugation</b>	Unconjugated

## Note

For laboratory research use only. Not for any clinical, therapeutic, or diagnostic use in humans or animals. Not for animal or human consumption.

Purchasers shall not, and agree not to enable third parties to, analyze, copy, reverse engineer or otherwise attempt to determine the structure or sequence of the product.

For full product information, images and publications, please visit our [website](#).

**DATA IMAGES**

**GTX109331 IHC-P Image**

Troponin I (cardiac) antibody detects Troponin I (cardiac) protein at cytoplasm by immunohistochemical analysis.

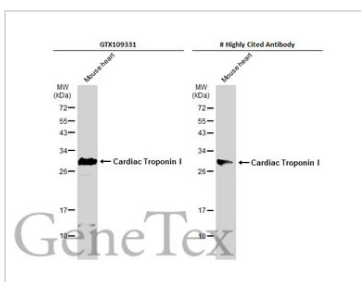
Sample: Paraffin-embedded mouse heart.

Green: Troponin I (cardiac) stained by Troponin I (cardiac) antibody (GTX109331) diluted at 1:250.

Red: beta Actin, a cytoskeleton marker, stained by beta Actin antibody [GT5512] (GTX629630) diluted at 1:500.

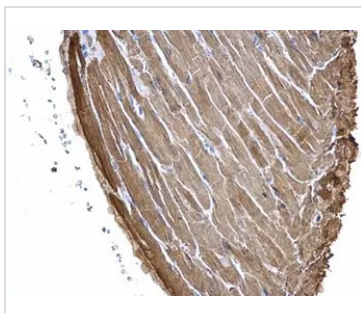
Blue: Fluoroshield with DAPI (GTX30920).

Antigen Retrieval: Citrate buffer, pH 6.0, 15 min


**GTX109331 WB Image**

Mouse tissue extract (50 µg) was separated by 12% SDS-PAGE, and the membranes were blotted with Cardiac Troponin I antibody [N1C3] (GTX109331) diluted at 1:3000 and competitor's antibody diluted at 1:3000. The HRP-conjugated anti-rabbit IgG antibody (GTX213110-01) was used to detect the primary antibody.

\*The competitor is not affiliated with GeneTex and does not endorse this product.


**GTX109331 IHC-P Image**

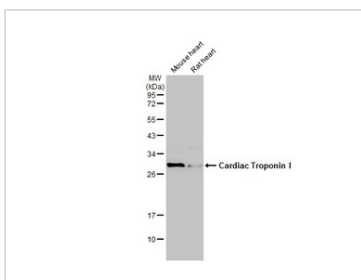
Cardiac Troponin I antibody [N1C3] detects Cardiac Troponin I protein at cytosol on mouse heart by immunohistochemical analysis.

Sample: Paraffin-embedded mouse heart.

Cardiac Troponin I antibody [N1C3] (GTX109331) dilution: 1:500.

Scale bar = M µm.

Antigen Retrieval: Trilogy™ (EDTA based, pH 8.0) buffer, 15min


**GTX109331 WB Image**

Various tissue extracts (50 µg) were separated by 12% SDS-PAGE, and the membrane was blotted with Cardiac Troponin I antibody [N1C3] (GTX109331) diluted at 1:3000. The HRP-conjugated anti-rabbit IgG antibody (GTX213110-01) was used to detect the primary antibody.



For full product information, images and publications, please visit our [website](https://www.genetex.com).