

Human Cardiac Troponin I protein, His tag

Cat. No. GTX109331-pro

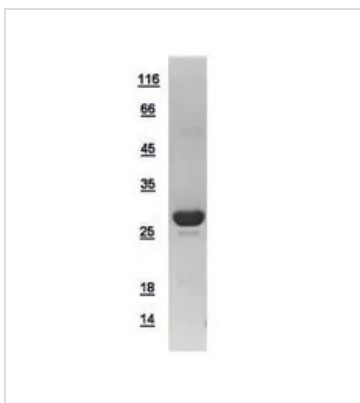
Applications	ELISA
Species	Human

Package
100 µg, 25 µg

Properties

Form	Liquid
Buffer	PBS, 0.1% SDS
Preservative	No preservatives
Storage	Store as concentrated solution. Centrifuge briefly prior to opening vial. Aliquot and store at -20°C or below. Avoid multiple freeze-thaw cycles.
Concentration	Batch dependent (Please refer to the vial label for the specific concentration.)
Region/Sequence	N-terminal His tagged full length protein of NP_000354
Expression System	E. coli
Purity	>95%
Conjugation	Unconjugated
Note	For In vitro laboratory use only. Not for any clinical, therapeutic, or diagnostic use in humans or animals. Not for animal or human consumption.

DATA IMAGES

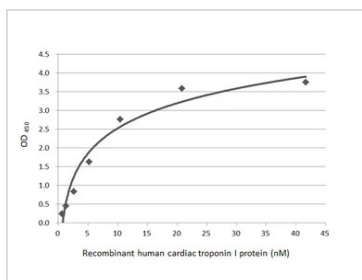


GTX109331-pro Image

10µg of GTX109331-pro Troponin I (cardiac) recombinant protein analyzed using SDS-PAGE and stained with coomassie blue and captured by black and white camera.



For full product information, images and publications, please visit our [website](#).



GTX109331-pro ELISA Image

Indirect ELISA analysis was performed by coating the plate with recombinant E.coli expressed, full-length Human Cardiac Troponin I protein, His tag (GTX109331-pro) (41.65-0.65 nM). Coated protein was probed with Cardiac Troponin I antibody [HL1489] (GTX636963) (1 µg/mL). Goat anti-rabbit IgG antibody (HRP) (GTX213110-01) (1:10000) was used to detect the bound primary antibody.



For full product information, images and publications, please visit our [website](#).