

IFT80 antibody

Cat. No. GTX109393

| | |
|--------------|-------------------|
| Host | Rabbit |
| Clonality | Polyclonal |
| Isotype | IgG |
| Applications | WB, ICC/IF, IHC-P |
| Reactivity | Human |

References (1)

Package

100 µl, 25 µl

Applications

Application Note

*Optimal dilutions/concentrations should be determined by the researcher.

| Suggested dilution | Recommended dilution |
|--------------------|----------------------|
| WB | 1:500-1:3000 |
| ICC/IF | 1:100-1:1000 |
| IHC-P | 1:100-1:1000 |

Not tested in other applications.

Calculated MW 88 kDa. ([Note](#))

Properties

| | |
|---------------|--|
| Form | Liquid |
| Buffer | 0.1M Tris, 0.1M Glycine, 10% Glycerol |
| Preservative | 0.01% Thimerosal |
| Storage | Store as concentrated solution. Centrifuge briefly prior to opening vial. For short-term storage (1-2 weeks), store at 4°C. For long-term storage, aliquot and store at -20°C or below. Avoid multiple freeze-thaw cycles. |
| Concentration | 0.78 mg/ml (Please refer to the vial label for the specific concentration.) |
| Immunogen | Recombinant protein encompassing a sequence within the center region of human IFT80. The exact sequence is proprietary. |
| Purification | Purified by antigen-affinity chromatography. |
| Conjugation | Unconjugated |

Note

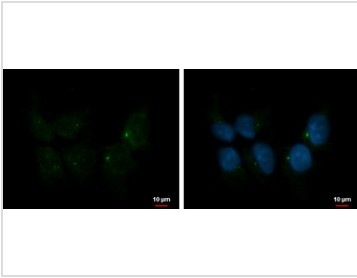
For laboratory research use only. Not for any clinical, therapeutic, or diagnostic use in humans or animals. Not for animal or human consumption.

Purchasers shall not, and agree not to enable third parties to, analyze, copy, reverse engineer or otherwise attempt to determine the structure or sequence of the product.



For full product information, images and publications, please visit our [website](#).

DATA IMAGES



GTX109393 ICC/IF Image

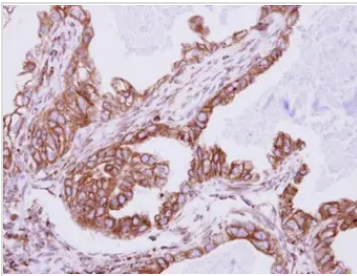
IFT80 antibody detects IFT80 protein at centrosome by immunofluorescent analysis.

Sample: NT2D1 cells were fixed in ice-cold MeOH for 5 min.

Green: IFT80 protein stained by IFT80 antibody (GTX109393) diluted at 1:500.

Blue: Hoechst 33342 staining.

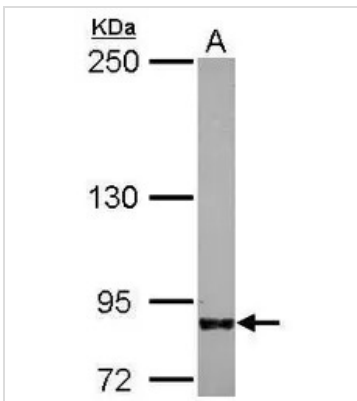
Scale bar = 10 μ m.



GTX109393 IHC-P Image

Immunohistochemical analysis of paraffin-embedded human adenocarcinoma, using IFT80(GTX109393) antibody at 1:500 dilution.

Antigen Retrieval: Trilogy™ (EDTA based, pH 8.0) buffer, 15min



GTX109393 WB Image

Sample (30 ug of whole cell lysate)

A: NT2D1

5% SDS PAGE

GTX109393 diluted at 1:500



For full product information, images and publications, please visit our [website](https://www.genetex.com).