

TKTL1 antibody [N1C1]

Cat. No. GTX109459

Host	Rabbit
Clonality	Polyclonal
Isotype	IgG
Applications	WB, ICC/IF, IHC-P
Reactivity	Human

References (4)

Package

100 µl, 25 µl

Applications

Application Note

*Optimal dilutions/concentrations should be determined by the researcher.

Suggested dilution	Recommended dilution
WB	1:1000-1:10000
ICC/IF	1:100-1:1000
IHC-P	1:100-1:1000

Not tested in other applications.

Calculated MW 65 kDa. ([Note](#))

Product Note Based on internal testing result, this antibody may cross react with human TKTL2 protein.

Properties

Form	Liquid
Buffer	PBS, 20% Glycerol
Preservative	0.025% ProClin 300
Storage	Store as concentrated solution. Centrifuge briefly prior to opening vial. For short-term storage (1-2 weeks), store at 4°C. For long-term storage, aliquot and store at -20°C or below. Avoid multiple freeze-thaw cycles.
Concentration	0.98 mg/ml (Please refer to the vial label for the specific concentration.)
Immunogen	Recombinant protein encompassing a sequence within the center region of human TKTL1. The exact sequence is proprietary.
Purification	Purified by antigen-affinity chromatography.
Conjugation	Unconjugated



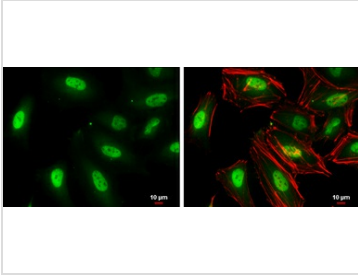
For full product information, images and publications, please visit our [website](#).

For laboratory research use only. Not for any clinical, therapeutic, or diagnostic use in humans or animals. Not for animal or human consumption.

Note

Purchasers shall not, and agree not to enable third parties to, analyze, copy, reverse engineer or otherwise attempt to determine the structure or sequence of the product.

DATA IMAGES



GTKX109459 ICC/IF Image

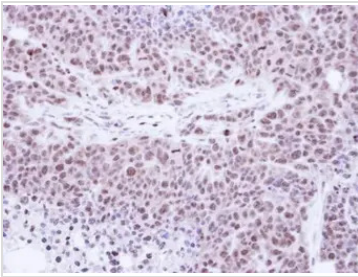
TKTL1 antibody [N1C1] detects TKTL1 protein at cytoplasm and nucleus by immunofluorescent analysis.

Sample: HeLa cells were fixed in 4% paraformaldehyde at RT for 15 min.

Green: TKTL1 protein stained by TKTL1 antibody [N1C1] (GTKX109459) diluted at 1:500.

Red: Phalloidin, a cytoskeleton marker, diluted at 1:100.

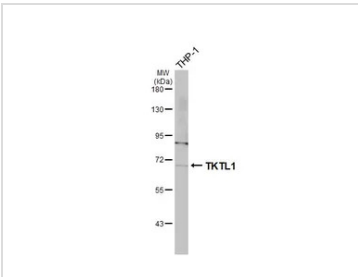
Scale bar = 10 μm.



GTKX109459 IHC-P Image

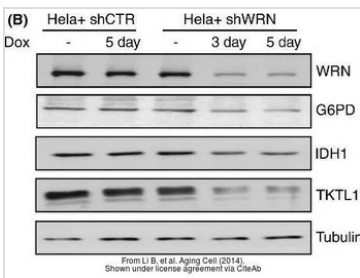
Immunohistochemical analysis of paraffin-embedded SAS xenograft , using Transketolase-like protein 1(GTKX109459) antibody at 1:100 dilution.

Antigen Retrieval: Trilogy™ (EDTA based, pH 8.0) buffer, 15min



GTKX109459 WB Image

Whole cell extract (30 μg) was separated by 7.5% SDS-PAGE, and the membrane was blotted with TKTL1 antibody [N1C1] (GTKX109459) diluted at 1:1000. The HRP-conjugated anti-rabbit IgG antibody (GTK213110-01) was used to detect the primary antibody.



GTKX109459 WB Image

The data was published in the journal Aging Cell in 2014. [PMID: 24757718](https://pubmed.ncbi.nlm.nih.gov/24757718/)



For full product information, images and publications, please visit our [website](https://www.genetex.com).