

## TKTL1 antibody [N1C1]

Cat. No. GTX109459

Host	Rabbit
Clonality	Polyclonal
Isotype	IgG
Applications	WB, ICC/IF, IHC-P
Reactivity	Human

References ( 4 )

Package

100 µl, 25 µl

## Applications

## Application Note

\*Optimal dilutions/concentrations should be determined by the researcher.

Suggested dilution	Recommended dilution
WB	1:1000-1:10000
ICC/IF	1:100-1:1000
IHC-P	1:100-1:1000

Not tested in other applications.

**Calculated MW** 65 kDa. ( [Note](#) )

**Product Note** Based on internal testing result, this antibody may cross react with human TKTL2 protein.

## Properties

Form	Liquid
Buffer	PBS, 20% Glycerol
Preservative	0.025% ProClin 300
Storage	Store as concentrated solution. Centrifuge briefly prior to opening vial. For short-term storage (1-2 weeks), store at 4°C. For long-term storage, aliquot and store at -20°C or below. Avoid multiple freeze-thaw cycles.
Concentration	0.98 mg/ml (Please refer to the vial label for the specific concentration.)
Immunogen	Recombinant protein encompassing a sequence within the center region of human TKTL1. The exact sequence is proprietary.
Purification	Purified by antigen-affinity chromatography.
Conjugation	Unconjugated

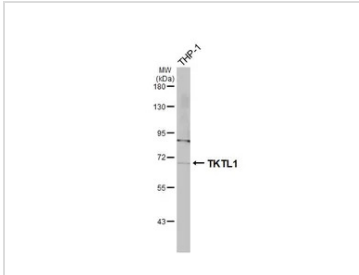


For full product information, images and publications, please visit our [website](#).

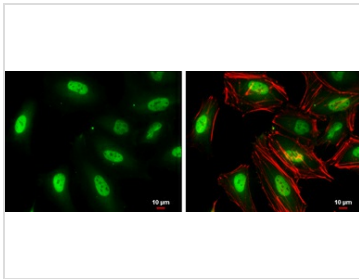
For laboratory research use only. Not for any clinical, therapeutic, or diagnostic use in humans or animals. Not for animal or human consumption.

**Note**

Purchasers shall not, and agree not to enable third parties to, analyze, copy, reverse engineer or otherwise attempt to determine the structure or sequence of the product.

**DATA IMAGES**

**GTX109459 WB Image**

Whole cell extract (30 µg) was separated by 7.5% SDS-PAGE, and the membrane was blotted with TKTL1 antibody [N1C1] (GTX109459) diluted at 1:1000. The HRP-conjugated anti-rabbit IgG antibody (GTX213110-01) was used to detect the primary antibody.


**GTX109459 ICC/IF Image**

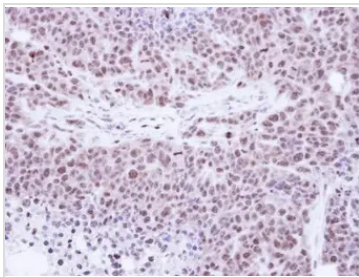
TKTL1 antibody [N1C1] detects TKTL1 protein at cytoplasm and nucleus by immunofluorescent analysis.

Sample: HeLa cells were fixed in 4% paraformaldehyde at RT for 15 min.

Green: TKTL1 protein stained by TKTL1 antibody [N1C1] (GTX109459) diluted at 1:500.

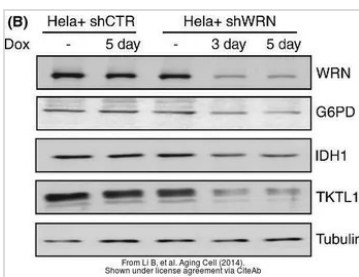
Red: Phalloidin, a cytoskeleton marker, diluted at 1:100.

Scale bar = 10 µm.


**GTX109459 IHC-P Image**

Immunohistochemical analysis of paraffin-embedded SAS xenograft, using Transketolase-like protein 1 (GTX109459) antibody at 1:100 dilution.

Antigen Retrieval: Trilogy™ (EDTA based, pH 8.0) buffer, 15min


**GTX109459 WB Image**

The data was published in the journal Aging Cell in 2014. [PMID: 24757718](https://pubmed.ncbi.nlm.nih.gov/24757718/)



For full product information, images and publications, please visit our [website](https://www.genetex.com).