

## MAD1 antibody

Cat. No. GTX109519

Host	Rabbit
Clonality	Polyclonal
Isotype	IgG
Applications	WB, ICC/IF, IHC-P, IP, ChIP assay
Reactivity	Human, Mouse, Rat, Potorous tridactylus/Potoroo

References ( 15 )

Package

100 µl, 25 µl

## Applications

## Application Note

\*Optimal dilutions/concentrations should be determined by the researcher.

Suggested dilution	Recommended dilution
WB	1:500-1:20000
ICC/IF	1:100-1:1000
IHC-P	1:100-1:1000
IP	1:100-1:500
ChIP assay	Assay dependent

Not tested in other applications.

Calculated MW 83 kDa. ( [Note](#) )

## Properties

Form	Liquid
Buffer	PBS, 20% Glycerol
Preservative	0.025% ProClin 300
Storage	Store as concentrated solution. Centrifuge briefly prior to opening vial. For short-term storage (1-2 weeks), store at 4°C. For long-term storage, aliquot and store at -20°C or below. Avoid multiple freeze-thaw cycles.
Concentration	1 mg/ml (Please refer to the vial label for the specific concentration.)
Immunogen	Recombinant protein encompassing a sequence within the center region of human MAD1. The exact sequence is proprietary.
Purification	Purified by antigen-affinity chromatography.
Conjugation	Unconjugated

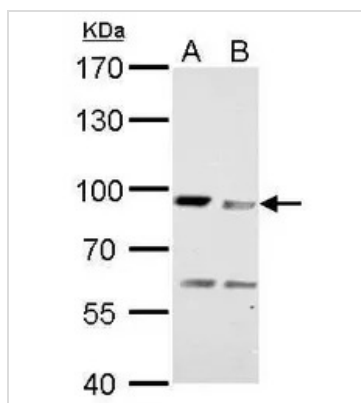
For full product information, images and publications, please visit our [website](#).

For laboratory research use only. Not for any clinical, therapeutic, or diagnostic use in humans or animals. Not for animal or human consumption.

## Note

Purchasers shall not, and agree not to enable third parties to, analyze, copy, reverse engineer or otherwise attempt to determine the structure or sequence of the product.

## DATA IMAGES



### GTX109519 WB Image

MAD1 antibody detects MAD1L1 protein by western blot analysis.

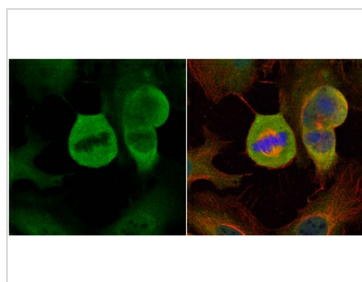
A. 30 µg PC-12 whole cell lysate/extract

B. 30 µg Rat2 whole cell lysate/extract

7.5% SDS-PAGE

MAD1 antibody (GTX109519) dilution: 1:3000

The HRP-conjugated anti-rabbit IgG antibody (GTX213110-01) was used to detect the primary antibody.



### GTX109519 ICC/IF Image

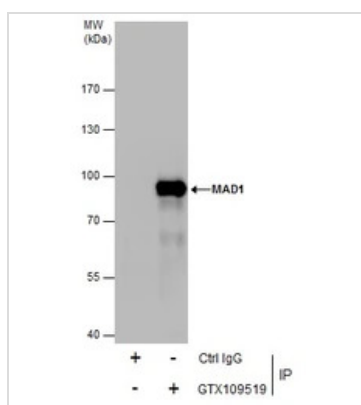
MAD1 antibody detects MAD1 protein at cytoplasm and nucleus by immunofluorescent analysis.

Sample: HeLa cells were fixed in 4% paraformaldehyde at RT for 15 min.

Green: MAD1 protein stained by MAD1 antibody (GTX109519) diluted at 1:500.

Red: HEC1, a kinetochore marker, stained by HEC1 antibody [9G3.23] (GTX70268) diluted at 1:500.

Blue: Hoechst 33342 staining.



### GTX109519 IP Image

Immunoprecipitation of MAD1 protein from HeLa whole cell extracts using 5 µg of MAD1 antibody (GTX109519).

Western blot analysis was performed using MAD1 antibody (GTX109519).

EasyBlot anti-Rabbit IgG (GTX221666-01) was used as a secondary reagent.



For full product information, images and publications, please visit our [website](https://www.genetex.com).