

PEX26 antibody

Cat. No. GTX109551

Host	Rabbit
Clonality	Polyclonal
Isotype	IgG
Applications	WB, ICC/IF, IHC-P
Reactivity	Human

Package
100 µl, 25 µl

Applications

Application Note

*Optimal dilutions/concentrations should be determined by the researcher.

Suggested dilution	Recommended dilution
WB	1:500-1:3000
ICC/IF	1:100-1:1000
IHC-P	1:100-1:1000

Not tested in other applications.

Calculated MW 34 kDa. ([Note](#))

Properties

Form	Liquid
Buffer	0.1M Tris, 0.1M Glycine, 10% Glycerol
Preservative	0.01% Thimerosal
Storage	Store as concentrated solution. Centrifuge briefly prior to opening vial. For short-term storage (1-2 weeks), store at 4°C. For long-term storage, aliquot and store at -20°C or below. Avoid multiple freeze-thaw cycles.
Concentration	1 mg/ml (Please refer to the vial label for the specific concentration.)
Immunogen	Full length human PEX26 Recombinant protein.
Purification	Purified by antigen-affinity chromatography.
Conjugation	Unconjugated

Note

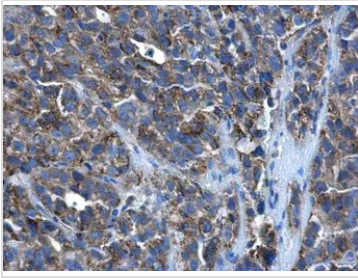
For laboratory research use only. Not for any clinical, therapeutic, or diagnostic use in humans or animals. Not for animal or human consumption.

Purchasers shall not, and agree not to enable third parties to, analyze, copy, reverse engineer or otherwise attempt to determine the structure or sequence of the product.



For full product information, images and publications, please visit our [website](#).

DATA IMAGES



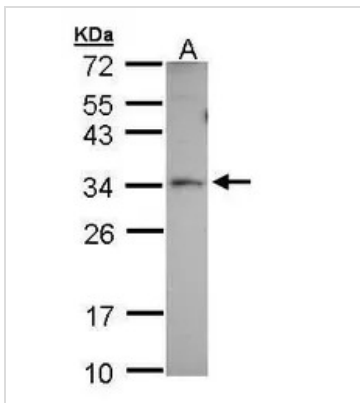
GTX109551 IHC-P Image

PEX26 antibody detects PEX26 protein at cytoplasm in human cervical cancer by immunohistochemical analysis.

Sample: Paraffin-embedded human cervical cancer.

PEX26 antibody (GTX109551) diluted at 1:500.

Antigen Retrieval: Citrate buffer, pH 6.0, 15 min



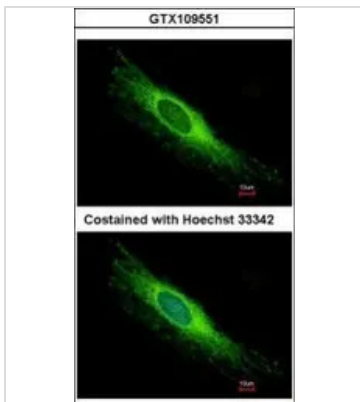
GTX109551 WB Image

Sample (30 ug of whole cell lysate)

A: A431

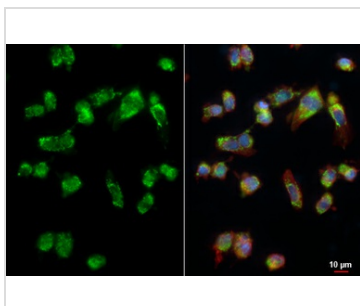
12% SDS PAGE

GTX109551 diluted at 1:1000



GTX109551 ICC/IF Image

Immunofluorescence analysis of methanol-fixed HeLa, using PEX26(GTX109551) antibody at 1:500 dilution.



GTX109551 ICC/IF Image

PEX26 antibody detects PEX26 protein by immunofluorescent analysis.

Sample: HT-1080 cells were fixed in ice-cold MeOH for 5 min.

Green: PEX26 stained by PEX26 antibody (GTX109551) diluted at 1:500.

Red: alpha Tubulin, a cytoskeleton marker, stained by alpha Tubulin antibody [GT114] (GTX628802) diluted at 1:1000.

Blue: Fluoroshield with DAPI (GTX30920).



For full product information, images and publications, please visit our [website](https://www.genetex.com).