

PEX26 antibody

Cat. No. GTX109551

| | |
|--------------|-------------------|
| Host | Rabbit |
| Clonality | Polyclonal |
| Isotype | IgG |
| Applications | WB, ICC/IF, IHC-P |
| Reactivity | Human |

Package
100 µl, 25 µl

Applications

Application Note

*Optimal dilutions/concentrations should be determined by the researcher.

| Suggested dilution | Recommended dilution |
|--------------------|----------------------|
| WB | 1:500-1:3000 |
| ICC/IF | 1:100-1:1000 |
| IHC-P | 1:100-1:1000 |

Not tested in other applications.

Calculated MW 34 kDa. ([Note](#))

Properties

| | |
|---------------|--|
| Form | Liquid |
| Buffer | 0.1M Tris, 0.1M Glycine, 10% Glycerol |
| Preservative | 0.01% Thimerosal |
| Storage | Store as concentrated solution. Centrifuge briefly prior to opening vial. For short-term storage (1-2 weeks), store at 4°C. For long-term storage, aliquot and store at -20°C or below. Avoid multiple freeze-thaw cycles. |
| Concentration | 1 mg/ml (Please refer to the vial label for the specific concentration.) |
| Immunogen | Full length human PEX26 Recombinant protein. |
| Purification | Purified by antigen-affinity chromatography. |
| Conjugation | Unconjugated |

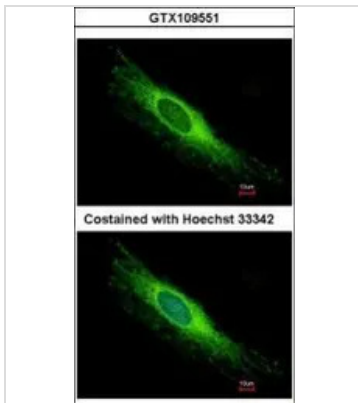
Note

For laboratory research use only. Not for any clinical, therapeutic, or diagnostic use in humans or animals. Not for animal or human consumption.

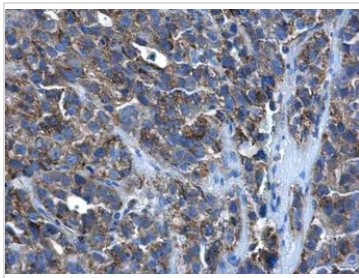
Purchasers shall not, and agree not to enable third parties to, analyze, copy, reverse engineer or otherwise attempt to determine the structure or sequence of the product.



For full product information, images and publications, please visit our [website](#).

DATA IMAGES

GTX109551 ICC/IF Image

Immunofluorescence analysis of methanol-fixed HeLa, using PEX26(GTX109551) antibody at 1:500 dilution.

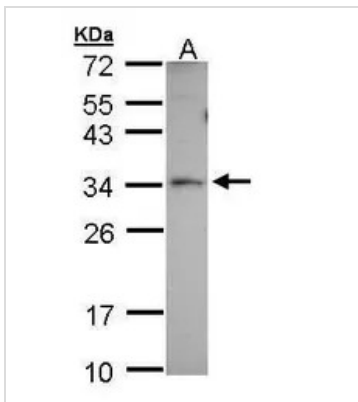

GTX109551 IHC-P Image

PEX26 antibody detects PEX26 protein at cytoplasm in human cervical cancer by immunohistochemical analysis.

Sample: Paraffin-embedded human cervical cancer.

PEX26 antibody (GTX109551) diluted at 1:500.

Antigen Retrieval: Citrate buffer, pH 6.0, 15 min


GTX109551 WB Image

Sample (30 ug of whole cell lysate)

A: A431

12% SDS PAGE

GTX109551 diluted at 1:1000



For full product information, images and publications, please visit our [website](https://www.genetex.com).