

## NDUFA12 antibody [N1C3]

Cat. No. GTX109567

Host	Rabbit
Clonality	Polyclonal
Isotype	IgG
Applications	WB, ICC/IF, IHC-P
Reactivity	Human, Mouse, Rat

Package  
100 µl, 25 µl

## Applications

## Application Note

\*Optimal dilutions/concentrations should be determined by the researcher.

Suggested dilution	Recommended dilution
WB	1:500-1:3000
ICC/IF	1:100-1:1000
IHC-P	1:100-1:1000

Not tested in other applications.

Calculated MW 17 kDa. ( [Note](#) )

## Properties

Form	Liquid
Buffer	0.1M Tris, 0.1M Glycine, 10% Glycerol
Preservative	0.01% Thimerosal
Storage	Store as concentrated solution. Centrifuge briefly prior to opening vial. For short-term storage (1-2 weeks), store at 4°C. For long-term storage, aliquot and store at -20°C or below. Avoid multiple freeze-thaw cycles.
Concentration	0.89 mg/ml (Please refer to the vial label for the specific concentration.)
Immunogen	Full length human NDUFA12 Recombinant protein.
Purification	Purified by antigen-affinity chromatography.
Conjugation	Unconjugated

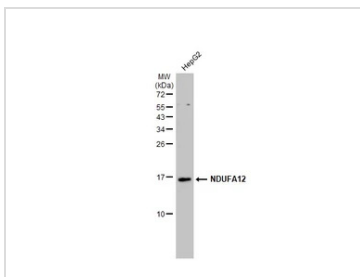
## Note

For laboratory research use only. Not for any clinical, therapeutic, or diagnostic use in humans or animals. Not for animal or human consumption.

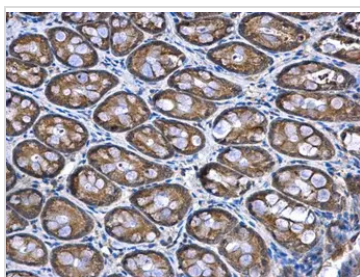
Purchasers shall not, and agree not to enable third parties to, analyze, copy, reverse engineer or otherwise attempt to determine the structure or sequence of the product.



For full product information, images and publications, please visit our [website](#).

**DATA IMAGES**

**GTX109567 WB Image**

Whole cell extract (30 µg) was separated by 15% SDS-PAGE, and the membrane was blotted with NDUFA12 antibody [N1C3] (GTX109567) diluted at 1:1000. The HRP-conjugated anti-rabbit IgG antibody (GTX213110-01) was used to detect the primary antibody.

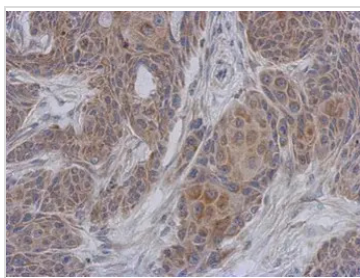

**GTX109567 IHC-P Image**

NDUFA12 antibody [N1C3] detects NDUFA12 protein at mitochondria in rat colon by immunohistochemical analysis.

Sample: Paraffin-embedded rat colon.

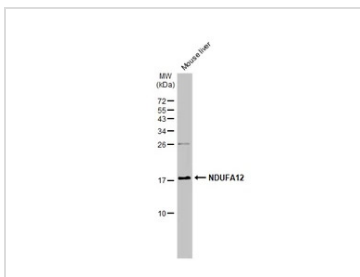
NDUFA12 antibody [N1C3] (GTX109567) diluted at 1:500.

Antigen Retrieval: Citrate buffer, pH 6.0, 15 min


**GTX109567 IHC-P Image**

Immunohistochemical analysis of paraffin-embedded Cal27 xenograft, using NDUFA12(GTX109567) antibody at 1:500 dilution.

Antigen Retrieval: Trilogy™ (EDTA based, pH 8.0) buffer, 15min


**GTX109567 WB Image**

Mouse tissue extract (50 µg) was separated by 15% SDS-PAGE, and the membrane was blotted with NDUFA12 antibody [N1C3] (GTX109567) diluted at 1:1000. The HRP-conjugated anti-rabbit IgG antibody (GTX213110-01) was used to detect the primary antibody.



For full product information, images and publications, please visit our [website](https://www.genetex.com).