

## UFD1L antibody

Cat. No. GTX109579

Host	Rabbit
Clonality	Polyclonal
Isotype	IgG
Applications	WB, ICC/IF, IHC-P
Reactivity	Human, Mouse

References ( 1 )

Package

100 µl, 25 µl

## Applications

## Application Note

\*Optimal dilutions/concentrations should be determined by the researcher.

Suggested dilution	Recommended dilution
WB	1:5000-1:20000
ICC/IF	1:100-1:1000
IHC-P	1:100-1:1000

Not tested in other applications.

Calculated MW 35 kDa. ( [Note](#) )

## Properties

Form	Liquid
Buffer	0.1M Tris, 0.1M Glycine, 10% Glycerol
Preservative	0.01% Thimerosal
Storage	Store as concentrated solution. Centrifuge briefly prior to opening vial. For short-term storage (1-2 weeks), store at 4°C. For long-term storage, aliquot and store at -20°C or below. Avoid multiple freeze-thaw cycles.
Concentration	1.02 mg/ml (Please refer to the vial label for the specific concentration.)
Immunogen	Full length human UFD1L Recombinant protein.
Purification	Purified by antigen-affinity chromatography.
Conjugation	Unconjugated

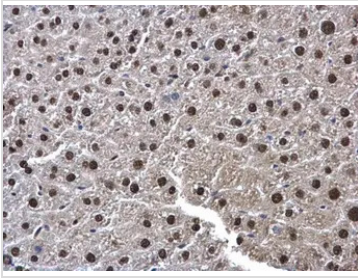
## Note

For laboratory research use only. Not for any clinical, therapeutic, or diagnostic use in humans or animals. Not for animal or human consumption.

Purchasers shall not, and agree not to enable third parties to, analyze, copy, reverse engineer or otherwise attempt to determine the structure or sequence of the product.



For full product information, images and publications, please visit our [website](#).

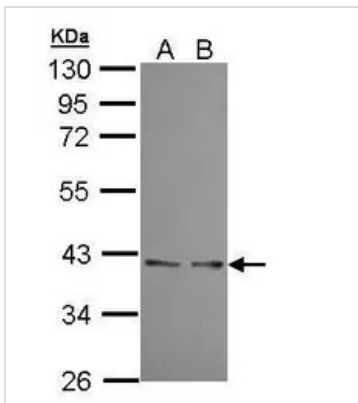
**DATA IMAGES**

**GTx109579 IHC-P Image**

UFD1L antibody detects UFD1L protein at cytoplasm and nucleus in mouse liver by immunohistochemical analysis.

Sample: Paraffin-embedded mouse liver.

UFD1L antibody (GTx109579) diluted at 1:500.

Antigen Retrieval: Citrate buffer, pH 6.0, 15 min

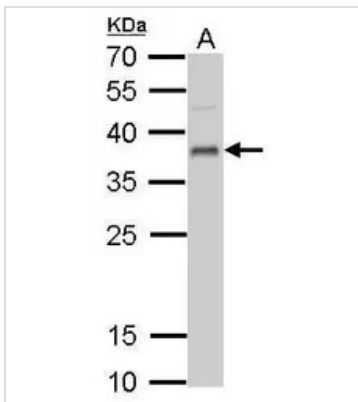

**GTx109579 WB Image**

Sample (30 ug of whole cell lysate)

A: A431 (GTx27909)

B: H1299

10% SDS PAGE GTx109579 diluted at 1:10000

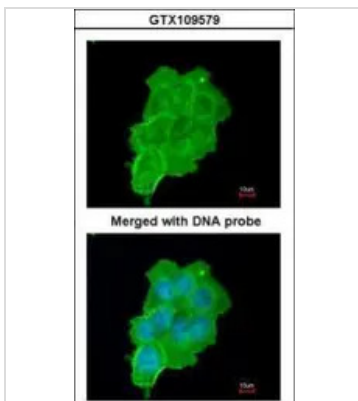

**GTx109579 WB Image**

UFD1L antibody detects UFD1L protein by Western blot analysis.

A. 50 µg mouse lung lysate/extract

12 % SDS-PAGE

UFD1L antibody (GTx109579) dilution: 1:1000


**GTx109579 ICC/IF Image**

Immunofluorescence analysis of paraformaldehyde-fixed A431, using UFD1L(GTx109579) antibody at 1:200 dilution.



For full product information, images and publications, please visit our [website](https://www.genetex.com).