

Troponin T1 (slow) skeletal muscle antibody

Cat. No. GTX109585

Host	Rabbit
Clonality	Polyclonal
Isotype	IgG
Applications	WB, IHC-P
Reactivity	Human, Pig

References (2)

★★★★★ Review (1)

Package

100 µl, 25 µl

Applications

Application Note

*Optimal dilutions/concentrations should be determined by the researcher.

Suggested dilution	Recommended dilution
WB	1:500-1:3000
IHC-P	1:100-1:1000

Not tested in other applications.

Calculated MW 33 kDa. ([Note](#))

Properties

Form	Liquid
Buffer	PBS, 20% Glycerol
Preservative	0.025% ProClin 300
Storage	Store as concentrated solution. Centrifuge briefly prior to opening vial. For short-term storage (1-2 weeks), store at 4°C. For long-term storage, aliquot and store at -20°C or below. Avoid multiple freeze-thaw cycles.
Concentration	1.71 mg/ml (Please refer to the vial label for the specific concentration.)
Immunogen	Full length human Troponin T1 (slow) skeletal muscle Recombinant protein.
Purification	Purified by antigen-affinity chromatography.
Conjugation	Unconjugated

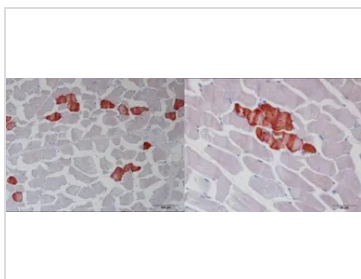
Note

For laboratory research use only. Not for any clinical, therapeutic, or diagnostic use in humans or animals. Not for animal or human consumption.

Purchasers shall not, and agree not to enable third parties to, analyze, copy, reverse engineer or otherwise attempt to determine the structure or sequence of the product.

For full product information, images and publications, please visit our [website](#).

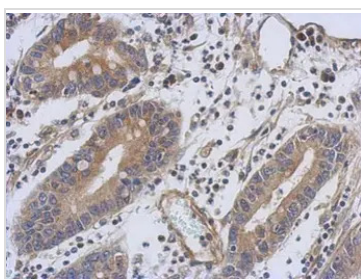
DATA IMAGES



GTX109585 IHC-P Image

Immunohistochemical analysis of paraffin-embedded Porcine skeletal muscle, using Troponin T1(GTX109585) antibody at 1:500 dilution.

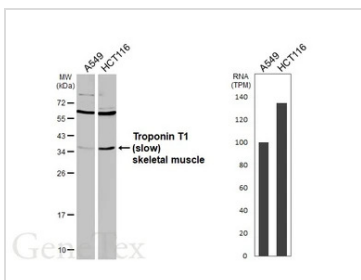
Antigen Retrieval: Trilogy™ (EDTA based, pH 8.0) buffer, 15min



GTX109585 IHC-P Image

Immunohistochemical analysis of paraffin-embedded human colon carcinoma, using Troponin T1 (slow skeletal)(GTX109585) antibody at 1:500 dilution.

Antigen Retrieval: Trilogy™ (EDTA based, pH 8.0) buffer, 15min



GTX109585 WB Image

Various whole cell extracts (30 µg) were separated by 12% SDS-PAGE, and the membrane was blotted with Troponin T1 (slow) skeletal muscle antibody (GTX109585) diluted at 1:1000. The HRP-conjugated anti-rabbit IgG antibody (GTX213110-01) was used to detect the primary antibody, and the signal was developed with Trident femto Western HRP Substrate. Corresponding RNA expression data are based on Human Protein Atlas program.



For full product information, images and publications, please visit our [website](#).