

## Ketoheokinase antibody [N1C3]

**Cat. No. GTX109591**

<b>Host</b>	Rabbit
<b>Clonality</b>	Polyclonal
<b>Isotype</b>	IgG
<b>Applications</b>	WB, IHC-P
<b>Reactivity</b>	Human, Mouse, Rat, Pig

References ( 10 )

Package

100 µl, 25 µl

## Applications

**Application Note**

\*Optimal dilutions/concentrations should be determined by the researcher.

Suggested dilution	Recommended dilution
WB	1:1000-1:10000
IHC-P	1:100-1:1000

Not tested in other applications.

**Calculated MW** 33 kDa. ( [Note](#) )

## Properties

<b>Form</b>	Liquid
<b>Buffer</b>	PBS, 1% BSA, 20% Glycerol
<b>Preservative</b>	0.025% ProClin 300
<b>Storage</b>	Store as concentrated solution. Centrifuge briefly prior to opening vial. For short-term storage (1-2 weeks), store at 4°C. For long-term storage, aliquot and store at -20°C or below. Avoid multiple freeze-thaw cycles.
<b>Concentration</b>	0.4 mg/ml (Please refer to the vial label for the specific concentration.)
<b>Immunogen</b>	Full length human Ketoheokinase Recombinant protein.
<b>Purification</b>	Purified by antigen-affinity chromatography.
<b>Conjugation</b>	Unconjugated

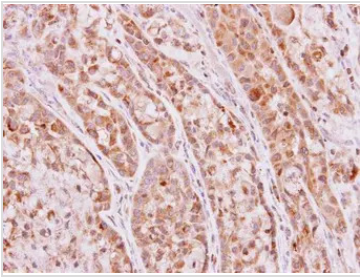
**Note**

For laboratory research use only. Not for any clinical, therapeutic, or diagnostic use in humans or animals. Not for animal or human consumption.

Purchasers shall not, and agree not to enable third parties to, analyze, copy, reverse engineer or otherwise attempt to determine the structure or sequence of the product.

For full product information, images and publications, please visit our [website](#).

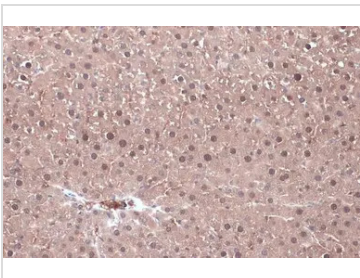
DATA IMAGES



**GTX109591 IHC-P Image**

Immunohistochemical analysis of paraffin-embedded A549 xenograft, using Ketohehexokinase(GTX109591) antibody at 1:500 dilution.

Antigen Retrieval: Citrate buffer, pH 6.0, 15 min



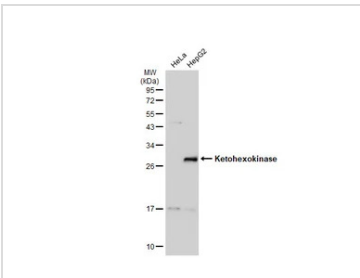
**GTX109591 IHC-P Image**

Ketohehexokinase antibody [N1C3] detects Ketohehexokinase protein at cytoplasm by immunohistochemical analysis.

Sample: Paraffin-embedded mouse liver.

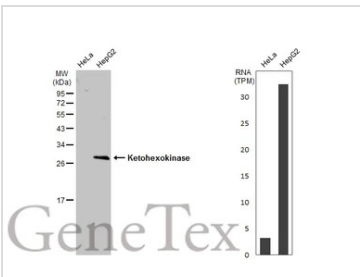
Ketohehexokinase stained by Ketohehexokinase antibody [N1C3] (GTX109591) diluted at 1:500.

Antigen Retrieval: Citrate buffer, pH 6.0, 15 min



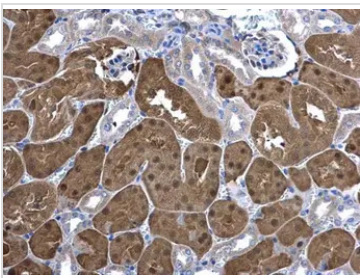
**GTX109591 WB Image**

Various whole cell extracts (30 µg) were separated by 12% SDS-PAGE, and the membrane was blotted with Ketohehexokinase antibody [N1C3] (GTX109591) diluted at 1:1000. The HRP-conjugated anti-rabbit IgG antibody (GTX213110-01) was used to detect the primary antibody.



**GTX109591 WB Image**

Various whole cell extracts (30 µg) were separated by 12% SDS-PAGE, and the membrane was blotted with Ketohehexokinase antibody [N1C3] (GTX109591) diluted at 1:1000. The HRP-conjugated anti-rabbit IgG antibody (GTX213110-01) was used to detect the primary antibody, and the signal was developed with Trident ECL plus-Enhanced. Corresponding RNA expression data for the same cell lines are based on Human Protein Atlas program.



**GTX109591 IHC-P Image**

Ketohehexokinase antibody [N1C3] detects Ketohehexokinase protein at cytoplasm and nucleus in mouse kidney by immunohistochemical analysis.

Sample: Paraffin-embedded mouse kidney.

Ketohehexokinase antibody [N1C3] (GTX109591) diluted at 1:500.

Antigen Retrieval: Citrate buffer, pH 6.0, 15 min



For full product information, images and publications, please visit our [website](#).