

## c-Myc antibody [N1], N-term

Cat. No. GTX109636

Host	Rabbit
Clonality	Polyclonal
Isotype	IgG
Applications	WB
Reactivity	Human

References ( 4 )

Package

100 µl, 25 µl

## Applications

## Application Note

\*Optimal dilutions/concentrations should be determined by the researcher.

Suggested dilution	Recommended dilution
WB	Assay dependent
Not tested in other applications.	

**Calculated MW** 49 kDa. ( [Note](#) )**Product Note** This antibody can detect the endogenous c-Myc, but it is unable to recognize the c-Myc tag.

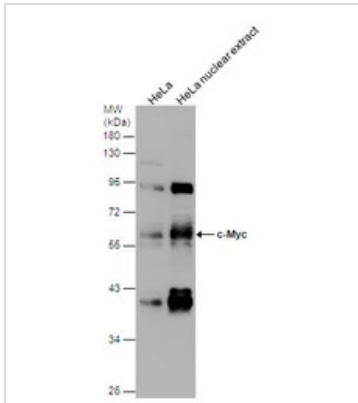
## Properties

Form	Liquid
Buffer	PBS, 20% Glycerol
Preservative	0.025% ProClin 300
Storage	Store as concentrated solution. Centrifuge briefly prior to opening vial. For short-term storage (1-2 weeks), store at 4°C. For long-term storage, aliquot and store at -20°C or below. Avoid multiple freeze-thaw cycles.
Concentration	2.17 mg/ml (Please refer to the vial label for the specific concentration.)
Immunogen	Recombinant protein encompassing a sequence within the N-terminus region of human c-Myc. The exact sequence is proprietary.
Purification	Purified by antigen-affinity chromatography.
Conjugation	Unconjugated
Note	<p>For laboratory research use only. Not for any clinical, therapeutic, or diagnostic use in humans or animals. Not for animal or human consumption.</p> <p>Purchasers shall not, and agree not to enable third parties to, analyze, copy, reverse engineer or otherwise attempt to determine the structure or sequence of the product.</p>



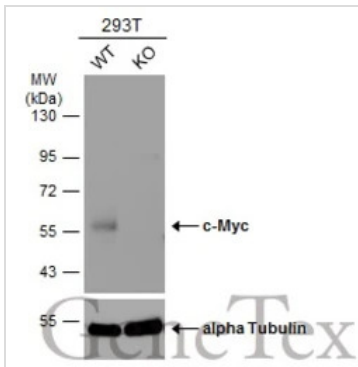
For full product information, images and publications, please visit our [website](#).

## DATA IMAGES



### GTx109636 WB Image

c-Myc antibody [N1], N-term detects c-Myc protein by Western blot analysis. HeLa whole cell extracts and nuclear extracts (30  $\mu$ g) were separated by 10% SDS-PAGE, and the membrane was blotted with c-Myc antibody [N1], N-term (GTx109636) diluted at 1:1000.



### GTx109636 WB Image

Wild-type (WT) and c-Myc knockout (KO) 293T cell extracts (30  $\mu$ g) were separated by 10% SDS-PAGE, and the membrane was blotted with c-Myc antibody [N1], N-term (GTx109636) diluted at 1:2000. The HRP-conjugated anti-rabbit IgG antibody (GTx213110-01) was used to detect the primary antibody.



For full product information, images and publications, please visit our [website](https://www.genetex.com).