

EEA1 antibody [C3], C-term

Cat. No. GTX109638

Host	Rabbit
Clonality	Polyclonal
Isotype	IgG
Applications	WB, ICC/IF, IHC-P
Reactivity	Human, Mouse, Rat, Hamster

References (15)

 Review (4)

Package

100 µl, 25 µl

Applications

Application Note

*Optimal dilutions/concentrations should be determined by the researcher.

Suggested dilution	Recommended dilution
WB	1:500-1:10000
ICC/IF	1:100-1:1000
IHC-P	1:100-1:1000

Not tested in other applications.

Calculated MW 162 kDa. ([Note](#))

Properties

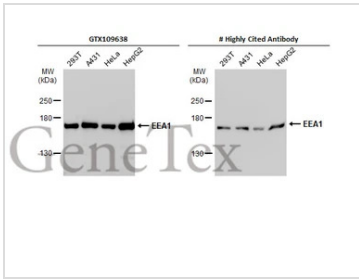
Form	Liquid
Buffer	PBS, 20% Glycerol
Preservative	0.01% Thimerosal
Storage	Store as concentrated solution. Centrifuge briefly prior to opening vial. For short-term storage (1-2 weeks), store at 4°C. For long-term storage, aliquot and store at -20°C or below. Avoid multiple freeze-thaw cycles.
Concentration	1 mg/ml (Please refer to the vial label for the specific concentration.)
Immunogen	Carrier-protein conjugated synthetic peptide encompassing a sequence within the C-terminus region of human EEA1. The exact sequence is proprietary.
Purification	Purified by antigen-affinity chromatography.
Conjugation	Unconjugated
Note	For laboratory research use only. Not for any clinical, therapeutic, or diagnostic use in humans or animals. Not for animal or human consumption. Purchasers shall not, and agree not to enable third parties to, analyze, copy, reverse engineer or otherwise attempt to determine the structure or sequence of the product.



For full product information, images and publications, please visit our [website](#).

Date 2026 / 05 / 04 Page 1 of 2

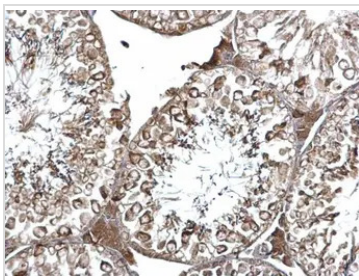
DATA IMAGES



GTX109638 WB Image

Various whole cell extracts (30 µg) were separated by 5% SDS-PAGE, and the membranes were blotted with EEA1 antibody [C3], C-term (GTX109638) diluted at 1:5000 and competitor's antibody diluted at 1:5000. The HRP-conjugated anti-rabbit IgG antibody (GTX213110-01) was used to detect the primary antibody.

*The competitor is not affiliated with GeneTex and does not endorse this product.



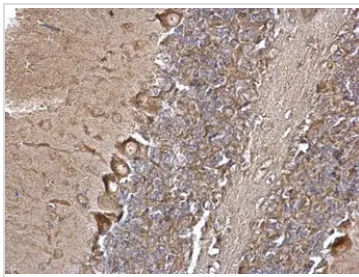
GTX109638 IHC-P Image

EEA1 antibody [C3], C-term detects EEA1 protein at cytosol on mouse testis by immunohistochemical analysis.

Sample: Paraffin-embedded mouse testis.

EEA1 antibody [C3], C-term (GTX109638) dilution: 1:500.

Antigen Retrieval: Trilogy™ (EDTA based, pH 8.0) buffer, 15min



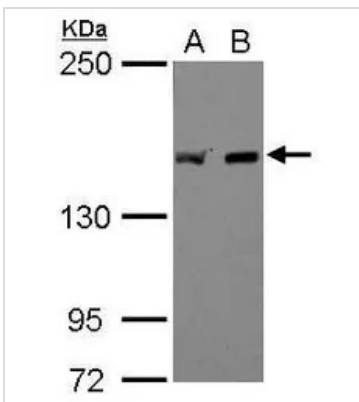
GTX109638 IHC-P Image

EEA1 antibody [C3], C-term detects EEA1 protein at cytosol on mouse brain by immunohistochemical analysis.

Sample: Paraffin-embedded mouse brain.

EEA1 antibody [C3], C-term (GTX109638) dilution: 1:500.

Antigen Retrieval: Trilogy™ (EDTA based, pH 8.0) buffer, 15min



GTX109638 WB Image

EEA1 antibody [C3], C-term detects EEA1 protein by western blot analysis.

A. 30 µg PC-12 whole cell lysate/extract

B. 30 µg Rat2 whole cell lysate/extract

5% SDS-PAGE

EEA1 antibody [C3], C-term (GTX109638) dilution: 1:1000

The HRP-conjugated anti-rabbit IgG antibody (GTX213110-01) was used to detect the primary antibody.



For full product information, images and publications, please visit our [website](#).