

## beta Actin antibody

Cat. No. GTX109639

Host	Rabbit
Clonality	Polyclonal
Isotype	IgG
Applications	WB, ICC/IF, IHC-P, IHC-Fr, IP
Reactivity	Human, Mouse, Rat, Yeast, Sheep, Drosophila, Cat, Dog, Hamster, Chicken, Pig, Monkey, Caenorhabditis elegans, Candida albicans, E. coli, Horse, Mosquito, Rice, Xenopus, Treeshrew, Plant, Worm

References ( 674 )

★★★★★ Review ( 13 )

Package

100 µl, 25 µl

## PRODUCT

## Summary

beta-Actin antibody detects beta-actin, a cytoskeletal protein with a predicted molecular weight of 42 kDa. Because of its widespread expression, beta-actin is commonly used as a loading control for various protein assays, particularly western blots, to estimate sample protein amount and quality.

## Applications

## Application Note

\*Optimal dilutions/concentrations should be determined by the researcher.

Suggested dilution	Recommended dilution
WB	1:500-1:20000
ICC/IF	1:100-1:1000
IHC-P	1:100-1:1000
IHC-Fr	Assay dependent
IP	Assay dependent

Not tested in other applications.

## Calculated MW

42 kDa. ( [Note](#) )

## Product Note

IP/MS validation was supported by references (PMID:30377395)

## Properties

Form	Liquid
Buffer	PBS, 1% BSA, 20% Glycerol
Preservative	0.025% ProClin 300
Storage	Store as concentrated solution. Centrifuge briefly prior to opening vial. For short-term storage (1-2 weeks), store at 4°C. For long-term storage, aliquot and store at -20°C or below. Avoid multiple freeze-thaw cycles.
Concentration	0.26 mg/ml (Please refer to the vial label for the specific concentration.)

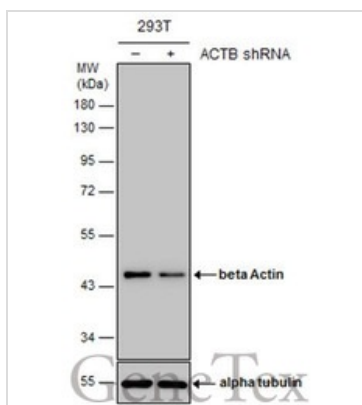


For full product information, images and publications, please visit our [website](#).

Date 2025 / 06 / 06 Page 1 of 2

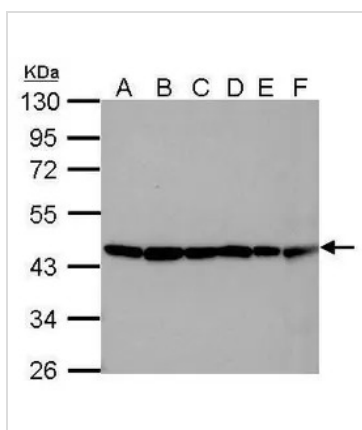
<b>Immunogen</b>	Carrier-protein conjugated synthetic peptide encompassing a sequence within the C-terminus region of human beta Actin. The exact sequence is proprietary.
<b>Purification</b>	Purified by antigen-affinity chromatography.
<b>Conjugation</b>	Unconjugated
<b>Note</b>	For laboratory research use only. Not for any clinical, therapeutic, or diagnostic use in humans or animals. Not for animal or human consumption.  Purchasers shall not, and agree not to enable third parties to, analyze, copy, reverse engineer or otherwise attempt to determine the structure or sequence of the product.

#### DATA IMAGES



#### GTx109639 WB Image

Non-transfected (–) and transfected (+) 293T whole cell extracts (10 µg) were separated by 10% SDS-PAGE, and the membrane was blotted with beta Actin antibody (GTx109639) diluted at 1:15000. The HRP-conjugated anti-rabbit IgG antibody (GTx213110-01) was used to detect the primary antibody.



#### GTx109639 WB Image

Sample (30 µg of whole cell lysate)

A: 293T

B: NTH-3T3

C: mouse brain

D: PC-12

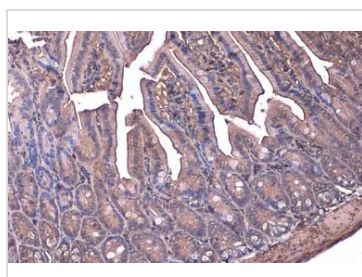
E: Rat brain

F: drosophila

10% SDS PAGE

GTx109639 diluted at 1:10000

The HRP-conjugated anti-rabbit IgG antibody (GTx213110-01) was used to detect the primary antibody.



#### GTx109639 IHC-P Image

beta Actin antibody detects beta Actin protein at cell membrane and cytoplasm by immunohistochemical analysis.

Sample: Paraffin-embedded mouse intestine.

beta Actin stained by beta Actin antibody (GTx109639) diluted at 1:500.

Antigen Retrieval: Citrate buffer, pH 6.0, 15 min



For full product information, images and publications, please visit our [website](https://www.genetex.com).