

HDAC2 antibody

Cat. No. GTX109642

Host	Rabbit
Clonality	Polyclonal
Isotype	IgG
Applications	WB, ICC/IF, IHC-P, IP, ChIP assay
Reactivity	Human, Mouse, Rat, Xenopus tropicalis

References (27)

★★★★★ Review (1)

Package

100 µl, 25 µl

Applications

Application Note

*Optimal dilutions/concentrations should be determined by the researcher.

Suggested dilution	Recommended dilution
WB	1:500-1:3000
ICC/IF	1:100-1:1000
IHC-P	1:100-1:1000
IP	1:100-1:500
ChIP assay	Assay dependent

Not tested in other applications.

Calculated MW 55 kDa. ([Note](#))

Product Note Knockdown/Knockout validation was supported by customer review data.

Properties

Form	Liquid
Buffer	PBS, 20% Glycerol
Preservative	0.025% ProClin 300
Storage	Store as concentrated solution. Centrifuge briefly prior to opening vial. For short-term storage (1-2 weeks), store at 4°C. For long-term storage, aliquot and store at -20°C or below. Avoid multiple freeze-thaw cycles.
Concentration	0.83 mg/ml (Please refer to the vial label for the specific concentration.)
Immunogen	Carrier-protein conjugated synthetic peptide encompassing a sequence within the C-terminus region of human HDAC2. The exact sequence is proprietary.
Purification	Purified by antigen-affinity chromatography.
Conjugation	Unconjugated



For full product information, images and publications, please visit our [website](#).

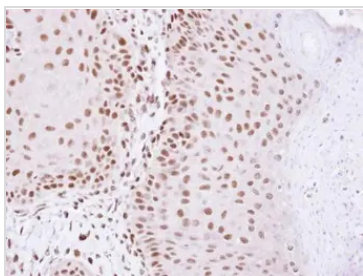
Date 2025 / 06 / 18 Page 1 of 2

For laboratory research use only. Not for any clinical, therapeutic, or diagnostic use in humans or animals. Not for animal or human consumption.

Note

Purchasers shall not, and agree not to enable third parties to, analyze, copy, reverse engineer or otherwise attempt to determine the structure or sequence of the product.

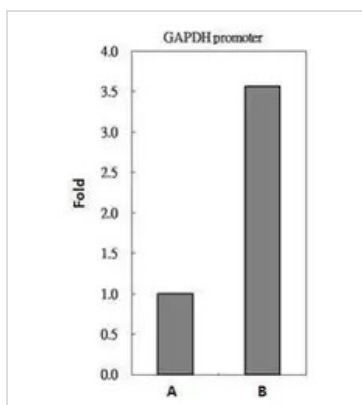
DATA IMAGES



GTx109642 IHC-P Image

Immunohistochemical analysis of paraffin-embedded Cal27 Xenograft, using HDAC2(GTX109642) antibody at 1:100 dilution.

Antigen Retrieval: Trilogy™ (EDTA based, pH 8.0) buffer, 15min



GTx109642 ChIP assay Image

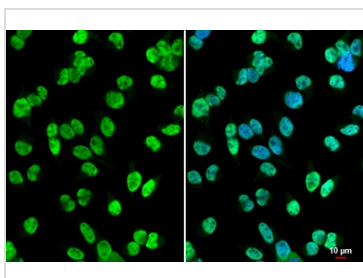
HDAC2 antibody immunoprecipitates HDAC2 protein-DNA complex in ChIP experiments. ChIP Sample:

293T whole cell lysate/extract

A. 5 µg preimmune rabbit IgG

B. 5 µg of HDAC2 antibody (GTx109642)

The precipitated DNA was detected by PCR with primer set targeting to GAPDH promoter.



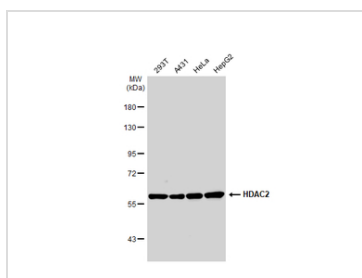
GTx109642 ICC/IF Image

HDAC2 antibody detects HDAC2 protein at nucleus by immunofluorescent analysis.

Sample: HeLa cells were fixed in 4% paraformaldehyde at RT for 15 min.

Green: HDAC2 stained by HDAC2 antibody (GTx109642) diluted at 1:500.

Blue: Fluoroshield with DAPI (GTx30920).



GTx109642 WB Image

Various whole cell extracts (30 µg) were separated by 7.5% SDS-PAGE, and the membrane was blotted with

HDAC2 antibody (GTx109642) diluted at 1:1000. The HRP-conjugated anti-rabbit IgG antibody

(GTx213110-01) was used to detect the primary antibody.



For full product information, images and publications, please visit our [website](#).