

## IL22 antibody

Cat. No. GTX109659

Host	Rabbit
Clonality	Polyclonal
Isotype	IgG
Applications	WB, IHC-P, ELISA
Reactivity	Human

References ( 2 )

Package

100 µl, 25 µl

## Applications

## Application Note

\*Optimal dilutions/concentrations should be determined by the researcher.

Suggested dilution	Recommended dilution
WB	1:500-1:3000
IHC-P	1:100-1:1000
ELISA	1:1000-1:10000

Not tested in other applications.

Calculated MW 20 kDa. ( [Note](#) )

## Properties

Form	Liquid
Buffer	0.1M Tris, 0.1M Glycine, 10% Glycerol
Preservative	0.01% Thimerosal
Storage	Store as concentrated solution. Centrifuge briefly prior to opening vial. For short-term storage (1-2 weeks), store at 4°C. For long-term storage, aliquot and store at -20°C or below. Avoid multiple freeze-thaw cycles.
Concentration	1 mg/ml (Please refer to the vial label for the specific concentration.)
Immunogen	Carrier-protein conjugated synthetic peptide encompassing a sequence within the center region of human IL22. The exact sequence is proprietary.
Purification	Purified by antigen-affinity chromatography.
Conjugation	Unconjugated

## Note

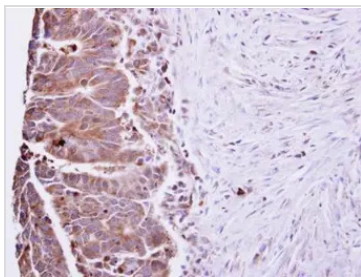
For laboratory research use only. Not for any clinical, therapeutic, or diagnostic use in humans or animals. Not for animal or human consumption.

Purchasers shall not, and agree not to enable third parties to, analyze, copy, reverse engineer or otherwise attempt to determine the structure or sequence of the product.



For full product information, images and publications, please visit our [website](#).

## DATA IMAGES



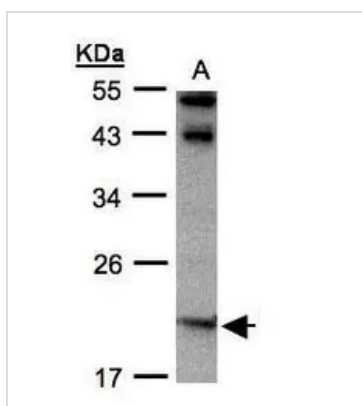
### GTx109659 IHC-P Image

IL22 antibody detects IL22 protein at cytosol on human colon carcinoma by immunohistochemical analysis.

Sample: Paraffin-embedded colon carcinoma.

IL22 antibody (GTx109659) dilution: 1:250.

Antigen Retrieval: Trilogy™ (EDTA based, pH 8.0) buffer, 15min



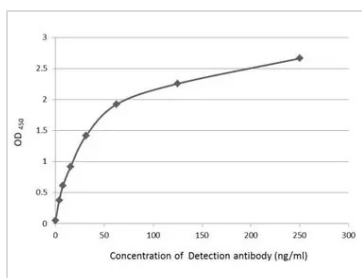
### GTx109659 WB Image

Sample(30 ug whole cell lysate)

A:MOLT4 (GTx27912)

12% SDS PAGE

GTx109659 diluted at 1:1000



### GTx109659 ELISA Image

An ELISA plate is coated with 50  $\mu$ L of a IL-22 recombinant protein at 5  $\mu$ g/mL. The coated protein is detected with anti-IL-22 antibody (GTx109659) at concentration ranged from 3.9 to 250 ng/mL.



For full product information, images and publications, please visit our [website](https://www.genetex.com).