

## CBX4 antibody [C3], C-term

**Cat. No. GTX109662**

<b>Host</b>	Rabbit
<b>Clonality</b>	Polyclonal
<b>Isotype</b>	IgG
<b>Applications</b>	WB, IHC-P
<b>Reactivity</b>	Human, Mouse

References ( 1 )

Package

100 µl, 25 µl

## Applications

**Application Note**

\*Optimal dilutions/concentrations should be determined by the researcher.

Suggested dilution	Recommended dilution
WB	1:1000
IHC-P	Assay dependent

Not tested in other applications.

**Calculated MW** 61 kDa. ( [Note](#) )**Product Note** KO/KD validation is based on published data (PMID: 27181215).

## Properties

<b>Form</b>	Liquid
<b>Buffer</b>	PBS, 20% Glycerol
<b>Preservative</b>	0.01% Thimerosal
<b>Storage</b>	Store as concentrated solution. Centrifuge briefly prior to opening vial. For short-term storage (1-2 weeks), store at 4°C. For long-term storage, aliquot and store at -20°C or below. Avoid multiple freeze-thaw cycles.
<b>Concentration</b>	1 mg/ml (Please refer to the vial label for the specific concentration.)
<b>Immunogen</b>	Carrier-protein conjugated synthetic peptide encompassing a sequence within the C-terminus region of human CBX4. The exact sequence is proprietary.
<b>Purification</b>	Purified by antigen-affinity chromatography.
<b>Conjugation</b>	Unconjugated

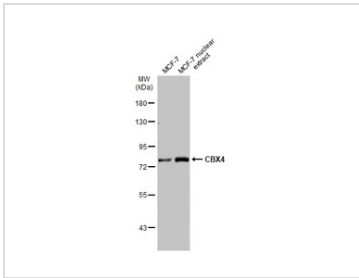
**Note**

For laboratory research use only. Not for any clinical, therapeutic, or diagnostic use in humans or animals. Not for animal or human consumption.

Purchasers shall not, and agree not to enable third parties to, analyze, copy, reverse engineer or otherwise attempt to determine the structure or sequence of the product.

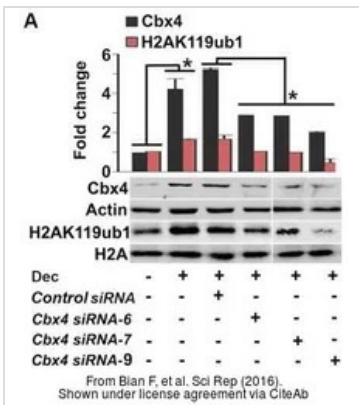
For full product information, images and publications, please visit our [website](#).

DATA IMAGES



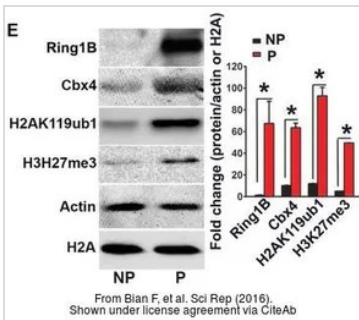
**GTX109662 WB Image**

MCF-7 whole cell and nuclear extracts (30 µg) were separated by 7.5% SDS-PAGE, and the membrane was blotted with CBX4 antibody [C3], C-term (GTX109662) diluted at 1:1000. The HRP-conjugated anti-rabbit IgG antibody (GTX213110-01) was used to detect the primary antibody.



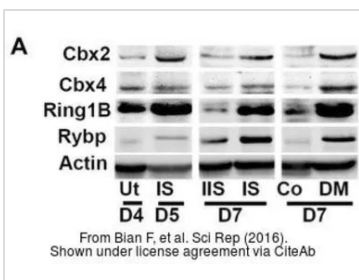
**GTX109662 WB Image**

The data was published in the journal Sci Rep in 2016. [PMID: 27181215](https://pubmed.ncbi.nlm.nih.gov/27181215/)



**GTX109662 WB Image**

The data was published in the journal Sci Rep in 2016. [PMID: 27181215](https://pubmed.ncbi.nlm.nih.gov/27181215/)



**GTX109662 WB Image**

The data was published in the journal Sci Rep in 2016. [PMID: 27181215](https://pubmed.ncbi.nlm.nih.gov/27181215/)



For full product information, images and publications, please visit our [website](https://www.genetex.com).