

STUB1 antibody [C1C3]

Cat. No. GTX109676

Host	Rabbit
Clonality	Polyclonal
Isotype	IgG
Applications	WB, ICC/IF, IHC-P
Reactivity	Human, Mouse

References (3)

Package

100 µl, 25 µl

Applications

Application Note

*Optimal dilutions/concentrations should be determined by the researcher.

Suggested dilution	Recommended dilution
WB	1:500-1:3000
ICC/IF	1:100-1:1000
IHC-P	1:100-1:1000

Not tested in other applications.

Calculated MW 35 kDa. ([Note](#))

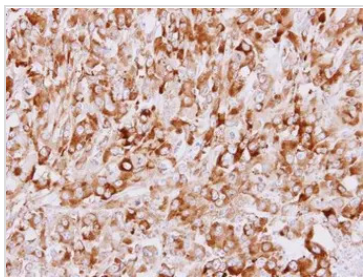
Properties

Form	Liquid
Buffer	0.1M Tris, 0.1M Glycine, 10% Glycerol
Preservative	0.01% Thimerosal
Storage	Store as concentrated solution. Centrifuge briefly prior to opening vial. For short-term storage (1-2 weeks), store at 4°C. For long-term storage, aliquot and store at -20°C or below. Avoid multiple freeze-thaw cycles.
Concentration	0.74 mg/ml (Please refer to the vial label for the specific concentration.)
Immunogen	Carrier-protein conjugated synthetic peptide encompassing a sequence within the C-terminus region of human STUB1. The exact sequence is proprietary.
Purification	Purified by antigen-affinity chromatography.
Conjugation	Unconjugated
Note	For laboratory research use only. Not for any clinical, therapeutic, or diagnostic use in humans or animals. Not for animal or human consumption. Purchasers shall not, and agree not to enable third parties to, analyze, copy, reverse engineer or otherwise attempt to determine the structure or sequence of the product.



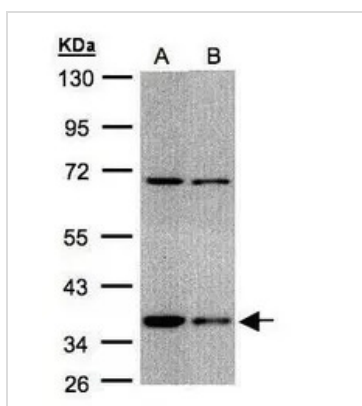
For full product information, images and publications, please visit our [website](#).

DATA IMAGES

**GTX109676 IHC-P Image**

Immunohistochemical analysis of paraffin-embedded ES2 xenograft, using STUB1(GTX109676) antibody at 1:500 dilution.

Antigen Retrieval: Trilogy™ (EDTA based, pH 8.0) buffer, 15min

**GTX109676 WB Image**

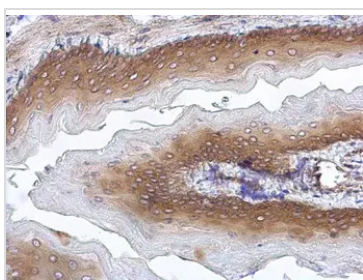
Sample(30 ug whole cell lysate)

A:293T

B:Hep G2 (GTX27900)

10% SDS PAGE

GTX109676 diluted at 1:1000

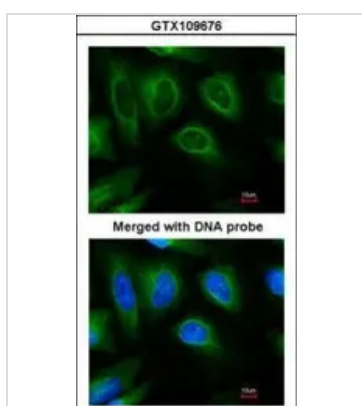
**GTX109676 IHC-P Image**

STUB1 antibody [C1C3] detects STUB1 protein at cytoplasm on mouse esophagus by immunohistochemical analysis.

Sample: Paraffin-embedded mouse esophagus.

STUB1 antibody [C1C3] (GTX109676) diluted at 1:500.

Antigen Retrieval: Trilogy™ (EDTA based, pH 8.0) buffer, 15min

**GTX109676 ICC/IF Image**

Immunofluorescence analysis of paraformaldehyde-fixed HeLa, using CHIP (GTX109676) antibody at 1:200 dilution.



For full product information, images and publications, please visit our [website](#).