

RAG2 antibody

Cat. No. GTX109710

Host	Rabbit
Clonality	Polyclonal
Isotype	IgG
Applications	WB, ICC/IF, IHC-P
Reactivity	Human, Rat

Package
100 µl, 25 µl

Applications

Application Note

*Optimal dilutions/concentrations should be determined by the researcher.

Suggested dilution	Recommended dilution
WB	1:500-1:3000
ICC/IF	1:100-1:1000
IHC-P	1:100-1:1000

Not tested in other applications.

Calculated MW 59 kDa. ([Note](#))

Properties

Form	Liquid
Buffer	0.1M Tris, 0.1M Glycine, 20% Glycerol
Preservative	0.01% Thimerosal
Storage	Store as concentrated solution. Centrifuge briefly prior to opening vial. For short-term storage (1-2 weeks), store at 4°C. For long-term storage, aliquot and store at -20°C or below. Avoid multiple freeze-thaw cycles.
Concentration	1.01 mg/ml (Please refer to the vial label for the specific concentration.)
Immunogen	Recombinant protein encompassing a sequence within the center region of human RAG2. The exact sequence is proprietary.
Purification	Purified by antigen-affinity chromatography.
Conjugation	Unconjugated

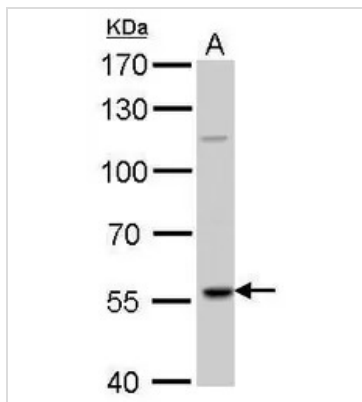
Note

For laboratory research use only. Not for any clinical, therapeutic, or diagnostic use in humans or animals. Not for animal or human consumption.

Purchasers shall not, and agree not to enable third parties to, analyze, copy, reverse engineer or otherwise attempt to determine the structure or sequence of the product.



For full product information, images and publications, please visit our [website](#).

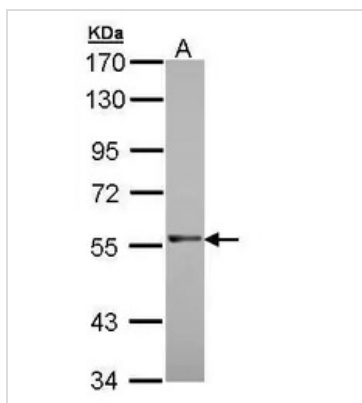
DATA IMAGES

GTX109710 WB Image

RAG2 antibody detects RAG2 protein by Western blot analysis.

A. 50 µg Rat thymus lysate/extract

7.5 % SDS-PAGE

RAG2 antibody (GTX109710) dilution: 1:1000

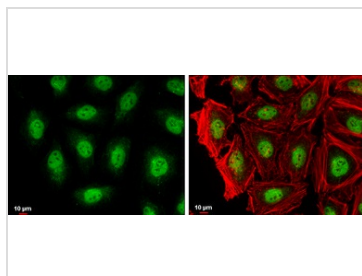

GTX109710 WB Image

Sample (30 ug of whole cell lysate)

A: Molt-4 (GTX27912)

7.5% SDS PAGE

GTX109710 diluted at 1:1000


GTX109710 ICC/IF Image

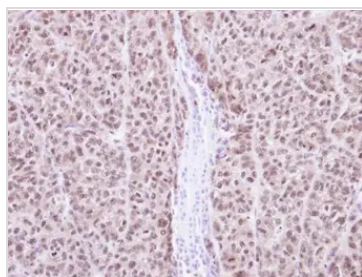
RAG2 antibody detects RAG2 protein at nucleus by immunofluorescent analysis.

Sample: HeLa cells were fixed in 4% paraformaldehyde at RT for 15 min.

Green: RAG2 protein stained by RAG2 antibody (GTX109710) diluted at 1:500.

Red: Phalloidin, a cytoskeleton marker, diluted at 1:200.

Scale bar = 10 µm.


GTX109710 IHC-P Image

Immunohistochemical analysis of paraffin-embedded DLD1 Xenograft, using RAG2(GTX109710) antibody at 1:100 dilution.

Antigen Retrieval: Trilogy™ (EDTA based, pH 8.0) buffer, 15min



For full product information, images and publications, please visit our [website](https://www.genetex.com).