

SUCLA2 antibody [N2C3]

Cat. No. GTX109728

Host	Rabbit
Clonality	Polyclonal
Isotype	IgG
Application	WB, ICC/IF, IHC-P
Reactivity	Human, Mouse

Reference (3)
 Package
 100 µl, 25 µl

APPLICATION

Application Note

*Optimal dilutions/concentrations should be determined by the researcher.

Suggested dilution	Recommended dilution
WB	1:500-1:3000
ICC/IF	1:100-1:1000
IHC-P	1:100-1:1000

Not tested in other applications.

Calculated MW 50 kDa. ([Note](#))

PROPERTIES

Form	Liquid
Buffer	0.1M Tris, 0.1M Glycine, 10% Glycerol
Preservative	0.01% Thimerosal
Storage	Store as concentrated solution. Centrifuge briefly prior to opening vial. For short-term storage (1-2 weeks), store at 4°C. For long-term storage, aliquot and store at -20°C or below. Avoid multiple freeze-thaw cycles.
Concentration	1 mg/ml (Please refer to the vial label for the specific concentration.)
Immunogen	Recombinant protein encompassing a sequence within the center region of human SUCLA2. The exact sequence is proprietary.
Purification	Purified by antigen-affinity chromatography.
Conjugation	Unconjugated

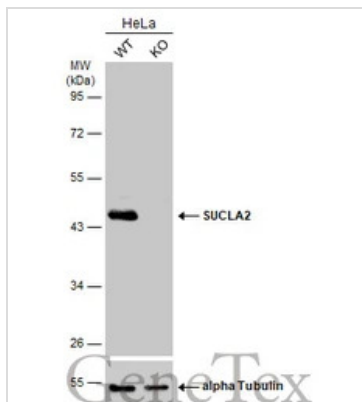
Note For laboratory research use only. Not for any clinical, therapeutic, or diagnostic use in humans or animals. Not for animal or human consumption.

Purchasers shall not, and agree not to enable third parties to, analyze, copy, reverse engineer or otherwise attempt to determine the structure or sequence of the product.



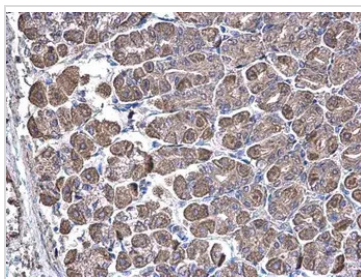
For full product information, images and publications, please visit our [website](#).

DATA IMAGES



GTx109728 WB Image

Wild-type (WT) and SUCLA2 knockout (KO) HeLa cell extracts (30 µg) were separated by 10% SDS-PAGE, and the membrane was blotted with SUCLA2 antibody [N2C3] (GTx109728) diluted at 1:1000. The HRP-conjugated anti-rabbit IgG antibody (GTx213110-01) was used to detect the primary antibody.



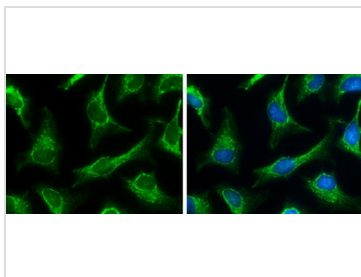
GTx109728 IHC-P Image

SUCLA2 antibody [N2C3] detects SUCLA2 protein at cytoplasm on mouse stomach by immunohistochemical analysis.

Sample: Paraffin-embedded mouse stomach.

SUCLA2 antibody [N2C3] (GTx109728) diluted at 1:500.

Antigen Retrieval: Trilogy™ (EDTA based, pH 8.0) buffer, 15min



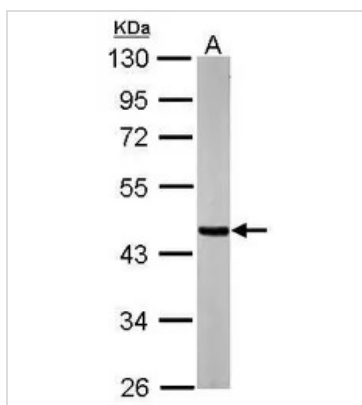
GTx109728 ICC/IF Image

SUCLA2 antibody [N2C3] detects SUCLA2 protein at mitochondria by immunofluorescent analysis.

Sample: HeLa cells were fixed in ice-cold MeOH for 5 min.

Green: SUCLA2 protein stained by SUCLA2 antibody [N2C3] (GTx109728) diluted at 1:500.

Blue: Hoechst 33342 staining.



GTx109728 WB Image

Sample (20 ug of whole cell lysate)

A: mouse brain

10% SDS PAGE

GTx109728 diluted at 1:20000



For full product information, images and publications, please visit our [website](https://www.genetex.com).