

## Gephyrin antibody [N2C1], Internal

Cat. No. GTX109734

Host	Rabbit
Clonality	Polyclonal
Isotype	IgG
Applications	WB, ICC/IF, IHC-P, IHC-Fr, IP
Reactivity	Human, Mouse, Rat

References ( 2 )

Package

100 µl, 25 µl

## Applications

## Application Note

\*Optimal dilutions/concentrations should be determined by the researcher.

Suggested dilution	Recommended dilution
WB	1:500-1:10000
ICC/IF	1:100-1:1000
IHC-P	1:100-1:1000
IHC-Fr	1:100-1:1000
IP	1:100-1:500

Not tested in other applications.

Calculated MW 80 kDa. ( [Note](#) )

## Properties

Form	Liquid
Buffer	PBS, 20% Glycerol
Preservative	0.025% ProClin 300
Storage	Store as concentrated solution. Centrifuge briefly prior to opening vial. For short-term storage (1-2 weeks), store at 4°C. For long-term storage, aliquot and store at -20°C or below. Avoid multiple freeze-thaw cycles.
Concentration	0.59 mg/ml (Please refer to the vial label for the specific concentration.)
Immunogen	Recombinant protein encompassing a sequence within the center region of human Gephyrin. The exact sequence is proprietary.
Purification	Purified by antigen-affinity chromatography.
Conjugation	Unconjugated

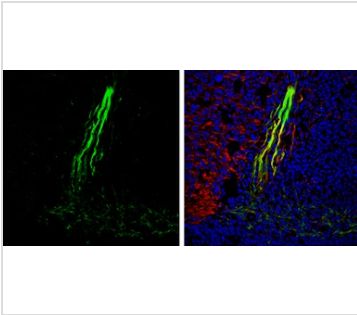
For full product information, images and publications, please visit our [website](#).

For laboratory research use only. Not for any clinical, therapeutic, or diagnostic use in humans or animals. Not for animal or human consumption.

## Note

Purchasers shall not, and agree not to enable third parties to, analyze, copy, reverse engineer or otherwise attempt to determine the structure or sequence of the product.

## DATA IMAGES



### GTX109734 IHC-Fr Image

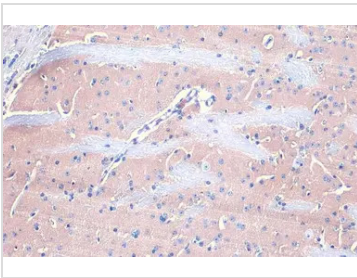
Gephyrin antibody [N2C1], Internal detects Gephyrin protein expression by immunohistochemical analysis.

Sample: Frozen sectioned E13.5 Rat brain.

Green: Gephyrin protein stained by Gephyrin antibody [N2C1], Internal (GTX109734) diluted at 1:250.

Red: beta Tubulin 3/ TUJ1, a mature neuron marker, stained by beta Tubulin 3/ TUJ1 antibody [GT11710] (GTX631836) diluted at 1:500.

Blue: Fluoroshield with DAPI (GTX30920).



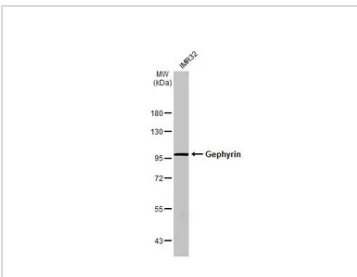
### GTX109734 IHC-P Image

Gephyrin antibody [N2C1], Internal detects Gephyrin protein at cytoplasm by immunohistochemical analysis.

Sample: Paraffin-embedded mouse brain.

Gephyrin stained by Gephyrin antibody [N2C1], Internal (GTX109734) diluted at 1:500.

Antigen Retrieval: Citrate buffer, pH 6.0, 15 min

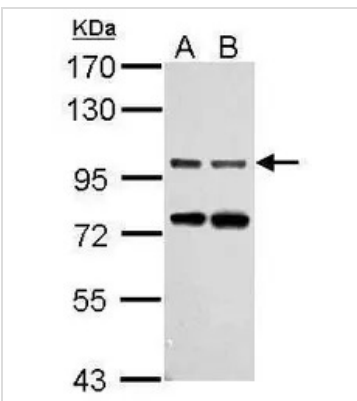


### GTX109734 WB Image

Whole cell extract (30 µg) was separated by 7.5% SDS-PAGE, and the membrane was blotted with Gephyrin

antibody [N2C1], Internal (GTX109734) diluted at 1:3000. The HRP-conjugated anti-rabbit IgG antibody

(GTX213110-01) was used to detect the primary antibody.



### GTX109734 WB Image

Sample (30 ug of whole cell lysate)

A: NIH-3T3

B: JC

7.5% SDS PAGE

GTX109734 diluted at 1:1000



For full product information, images and publications, please visit our [website](https://www.genetex.com).