

LYAG antibody [C2C3], C-term

Cat. No. GTX109821

Host	Rabbit
Clonality	Polyclonal
Isotype	IgG
Application	WB, IHC-P
Reactivity	Human

[Reference \(2 \)](#)

Package

100 µl, 25 µl

APPLICATION

Application Note

*Optimal dilutions/concentrations should be determined by the researcher.

Suggested dilution	Recommended dilution
WB	1:500-1:3000
IHC-P	1:100-1:1000

Not tested in other applications.

Calculated MW 105 kDa. ([Note](#))

PROPERTIES

Form	Liquid
Buffer	PBS, 20% Glycerol
Preservative	0.025% ProClin 300
Storage	Store as concentrated solution. Centrifuge briefly prior to opening vial. For short-term storage (1-2 weeks), store at 4°C. For long-term storage, aliquot and store at -20°C or below. Avoid multiple freeze-thaw cycles.
Concentration	0.76 mg/ml (Please refer to the vial label for the specific concentration.)
Immunogen	Recombinant protein encompassing a sequence within the C-terminus region of human LYAG. The exact sequence is proprietary.
Purification	Purified by antigen-affinity chromatography.
Conjugation	Unconjugated

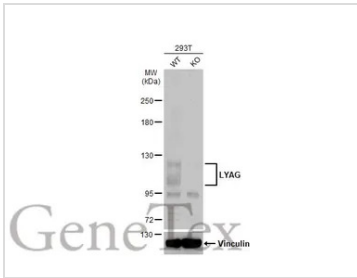
Note

For laboratory research use only. Not for any clinical, therapeutic, or diagnostic use in humans or animals. Not for animal or human consumption.

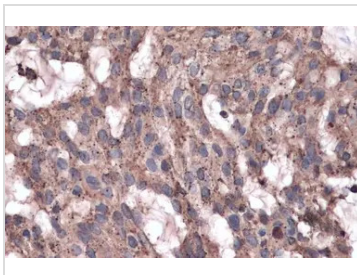
Purchasers shall not, and agree not to enable third parties to, analyze, copy, reverse engineer or otherwise attempt to determine the structure or sequence of the product.



For full product information, images and publications, please visit our [website](#).

DATA IMAGES

GTX109821 WB Image

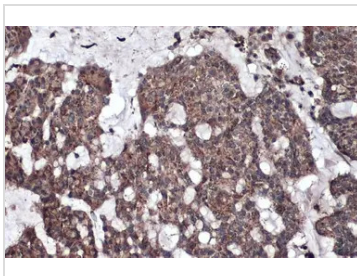
Wild-type (WT) and LYAG knockout (KO) 293T cell extracts (30 µg) were separated by 5% SDS-PAGE, and the membrane was blotted with LYAG antibody [C2C3], C-term (GTX109821) diluted at 1:200. The HRP-conjugated anti-rabbit IgG antibody (GTX213110-01) was used to detect the primary antibody.


GTX109821 IHC-P Image

LYAG antibody [C2C3], C-term detects LYAG protein at cytoplasm by immunohistochemical analysis. Sample: Paraffin-embedded human breast carcinoma.

LYAG stained by LYAG antibody [C2C3], C-term (GTX109821) diluted at 1:500.

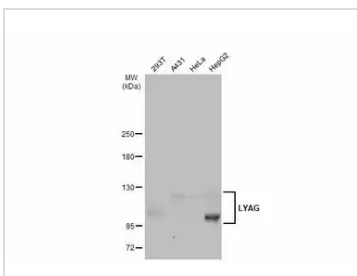
Antigen Retrieval: Citrate buffer, pH 6.0, 15 min


GTX109821 IHC-P Image

LYAG antibody [C2C3], C-term detects LYAG protein at cytoplasm by immunohistochemical analysis. Sample: Paraffin-embedded human breast carcinoma.

LYAG stained by LYAG antibody [C2C3], C-term (GTX109821) diluted at 1:1000.

Antigen Retrieval: Citrate buffer, pH 6.0, 15 min


GTX109821 WB Image

Various whole cell extracts (30 µg) were separated by 5% SDS-PAGE, and the membrane was blotted with LYAG antibody [C2C3], C-term (GTX109821) diluted at 1:1000. The HRP-conjugated anti-rabbit IgG antibody (GTX213110-01) was used to detect the primary antibody.



For full product information, images and publications, please visit our [website](https://www.genetex.com).