

# TCF3 / E2A antibody

**Cat. No. GTX109885**

<b>Host</b>	Rabbit
<b>Clonality</b>	Polyclonal
<b>Isotype</b>	IgG
<b>Applications</b>	WB, ICC/IF, IHC-P, IP
<b>Reactivity</b>	Human, Mouse, Rat

**Package**  
100 µl, 25 µl

## Applications

### Application Note

\*Optimal dilutions/concentrations should be determined by the researcher.

Suggested dilution	Recommended dilution
WB	1:1000-1:10000
ICC/IF	Assay dependent
IHC-P	Assay dependent
IP	1:100-1:500

Not tested in other applications.

**Calculated MW** 68 kDa. ( [Note](#) )

## Properties

<b>Form</b>	Liquid
<b>Buffer</b>	PBS, 20% Glycerol
<b>Preservative</b>	0.025% ProClin 300
<b>Storage</b>	Store as concentrated solution. Centrifuge briefly prior to opening vial. For short-term storage (1-2 weeks), store at 4°C. For long-term storage, aliquot and store at -20°C or below. Avoid multiple freeze-thaw cycles.
<b>Concentration</b>	1.19 mg/ml (Please refer to the vial label for the specific concentration.)
<b>Immunogen</b>	Recombinant protein encompassing a sequence within the center region of human TCF3. The exact sequence is proprietary.
<b>Purification</b>	Purified by antigen-affinity chromatography.
<b>Conjugation</b>	Unconjugated

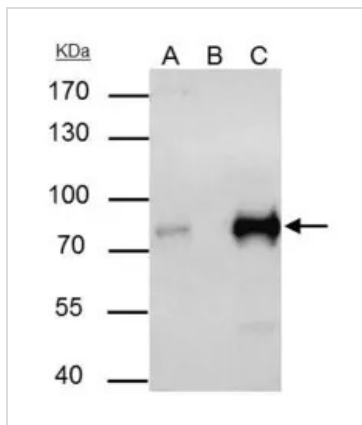
### Note

For laboratory research use only. Not for any clinical, therapeutic, or diagnostic use in humans or animals. Not for animal or human consumption.

Purchasers shall not, and agree not to enable third parties to, analyze, copy, reverse engineer or otherwise attempt to determine the structure or sequence of the product.



For full product information, images and publications, please visit our [website](#).

**DATA IMAGES**

**GTx109885 IP Image**

TCF3 / E2A antibody immunoprecipitates TCF3 protein in IP experiments.

IP samples: Jurkat whole cell extract

A. 35 µg Jurkat whole cell extract

B. Control with 4 µg of preimmune Rabbit IgG

C. Immunoprecipitation of TCF3 protein by 4 µg TCF3 / E2A antibody (GTx109885)

7.5 % SDS-PAGE

The immunoprecipitated TCF3 protein was detected by TCF3 / E2A antibody (GTx109885) diluted at 1:1000.

[EasyBlot anti-rabbit IgG (GTx221666-01) was used as a secondary reagent]

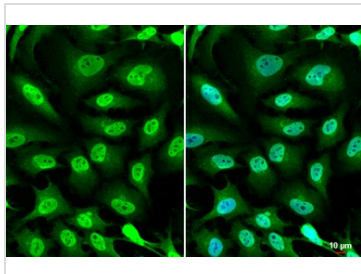

**GTx109885 IHC-P Image**

TCF3 / E2A antibody detects TCF3 protein at cytoplasm and nucleus by immunohistochemical analysis.

Sample: Paraffin-embedded rat brain.

TCF3 stained by TCF3 / E2A antibody (GTx109885) diluted at 1:500.

Antigen Retrieval: Citrate buffer, pH 6.0, 15 min

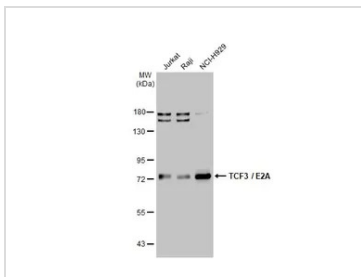

**GTx109885 ICC/IF Image**

TCF3 / E2A antibody detects TCF3 protein at cytoplasm and nucleus by immunofluorescent analysis.

Sample: HeLa cells were fixed in 4% paraformaldehyde at RT for 15 min.

Green: TCF3 stained by TCF3 / E2A antibody (GTx109885) diluted at 1:600.

Blue: Fluoroshield with DAPI (GTx30920).


**GTx109885 WB Image**

Various whole cell extracts (30 µg) were separated by 7.5% SDS-PAGE, and the membrane was blotted with TCF3 / E2A antibody (GTx109885) diluted at 1:5000. The HRP-conjugated anti-rabbit IgG antibody (GTx213110-01) was used to detect the primary antibody, and the signal was developed with Trident ECL plus-Enhanced.



For full product information, images and publications, please visit our [website](https://www.genetex.com).