

TCF3 / E2A antibody

Cat. No. GTX109885

Host	Rabbit
Clonality	Polyclonal
Isotype	IgG
Applications	WB, ICC/IF, IHC-P, IP
Reactivity	Human, Mouse, Rat

Package
100 µl, 25 µl

Applications

Application Note

*Optimal dilutions/concentrations should be determined by the researcher.

Suggested dilution	Recommended dilution
WB	1:1000-1:10000
ICC/IF	Assay dependent
IHC-P	Assay dependent
IP	1:100-1:500

Not tested in other applications.

Calculated MW 68 kDa. ([Note](#))

Properties

Form	Liquid
Buffer	PBS, 20% Glycerol
Preservative	0.025% ProClin 300
Storage	Store as concentrated solution. Centrifuge briefly prior to opening vial. For short-term storage (1-2 weeks), store at 4°C. For long-term storage, aliquot and store at -20°C or below. Avoid multiple freeze-thaw cycles.
Concentration	1.19 mg/ml (Please refer to the vial label for the specific concentration.)
Immunogen	Recombinant protein encompassing a sequence within the center region of human TCF3. The exact sequence is proprietary.
Purification	Purified by antigen-affinity chromatography.
Conjugation	Unconjugated

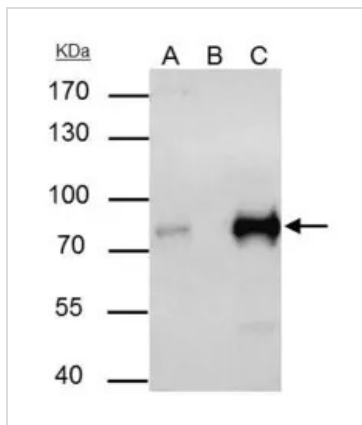
Note

For laboratory research use only. Not for any clinical, therapeutic, or diagnostic use in humans or animals. Not for animal or human consumption.

Purchasers shall not, and agree not to enable third parties to, analyze, copy, reverse engineer or otherwise attempt to determine the structure or sequence of the product.



For full product information, images and publications, please visit our [website](#).

DATA IMAGES

GTX109885 IP Image

TCF3 / E2A antibody immunoprecipitates TCF3 protein in IP experiments.

IP samples: Jurkat whole cell extract

A. 35 µg Jurkat whole cell extract

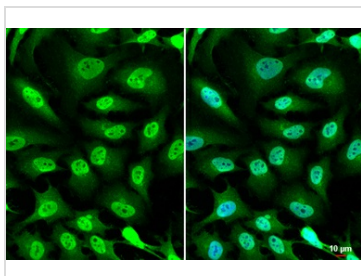
B. Control with 4 µg of preimmune Rabbit IgG

C. Immunoprecipitation of TCF3 protein by 4 µg TCF3 / E2A antibody (GTX109885)

7.5 % SDS-PAGE

The immunoprecipitated TCF3 protein was detected by TCF3 / E2A antibody (GTX109885) diluted at 1:1000.

[EasyBlot anti-rabbit IgG (GTX221666-01) was used as a secondary reagent]

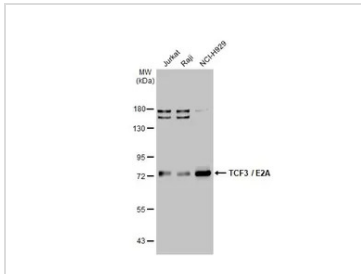

GTX109885 ICC/IF Image

TCF3 / E2A antibody detects TCF3 protein at cytoplasm and nucleus by immunofluorescent analysis.

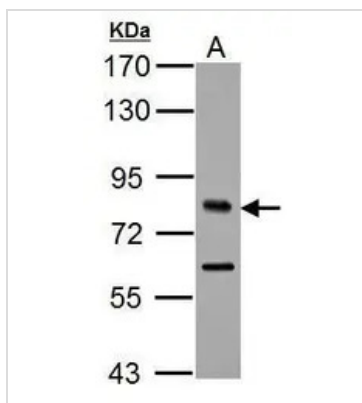
Sample: HeLa cells were fixed in 4% paraformaldehyde at RT for 15 min.

Green: TCF3 stained by TCF3 / E2A antibody (GTX109885) diluted at 1:600.

Blue: Fluoroshield with DAPI (GTX30920).


GTX109885 WB Image

Various whole cell extracts (30 µg) were separated by 7.5% SDS-PAGE, and the membrane was blotted with TCF3 / E2A antibody (GTX109885) diluted at 1:5000. The HRP-conjugated anti-rabbit IgG antibody (GTX213110-01) was used to detect the primary antibody, and the signal was developed with Trident ECL plus-Enhanced.


GTX109885 WB Image

Sample (30 ug of whole cell lysate)

A: BCL-1

7.5% SDS PAGE

GTX109885 diluted at 1:2000



For full product information, images and publications, please visit our [website](https://www.genetex.com).