

Lamin B2 antibody [N3C2], Internal

Cat. No. GTX109894

Host	Rabbit
Clonality	Polyclonal
Isotype	IgG
Applications	WB, IHC-P, IP
Reactivity	Human, Mouse

References (2)

Package

100 µl, 25 µl

Applications

Application Note

*Optimal dilutions/concentrations should be determined by the researcher.

Suggested dilution	Recommended dilution
WB	1:500-1:40000
IHC-P	1:100-1:1000
IP	1:100-1:500

Not tested in other applications.

Calculated MW 68 kDa. ([Note](#))

Properties

Form	Liquid
Buffer	PBS, 20% Glycerol
Preservative	0.025% ProClin 300
Storage	Store as concentrated solution. Centrifuge briefly prior to opening vial. For short-term storage (1-2 weeks), store at 4°C. For long-term storage, aliquot and store at -20°C or below. Avoid multiple freeze-thaw cycles.
Concentration	0.58 mg/ml (Please refer to the vial label for the specific concentration.)
Immunogen	Recombinant protein encompassing a sequence within the center region of human Lamin B2. The exact sequence is proprietary.
Purification	Purified by antigen-affinity chromatography.
Conjugation	Unconjugated

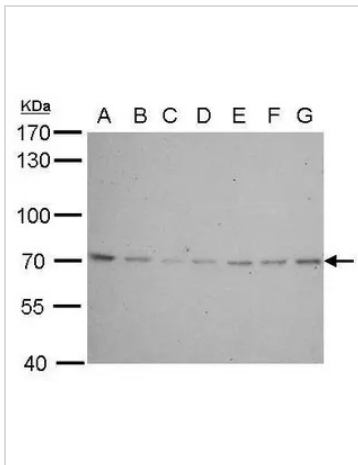
Note

For laboratory research use only. Not for any clinical, therapeutic, or diagnostic use in humans or animals. Not for animal or human consumption.

Purchasers shall not, and agree not to enable third parties to, analyze, copy, reverse engineer or otherwise attempt to determine the structure or sequence of the product.



For full product information, images and publications, please visit our [website](#).

DATA IMAGES

GTX109894 WB Image

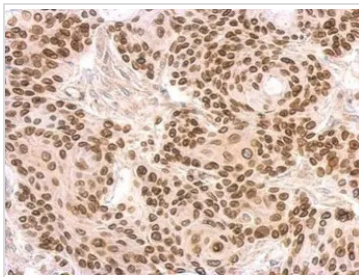
Lamin B2 antibody [N3C2], Internal detects LMNB2 protein by western blot analysis.

- A. 30 µg Neuro2A whole cell lysate/extract
- B. 30 µg GL261 whole cell lysate/extract
- C. 30 µg C8D30 whole cell lysate/extract
- D. 30 µg NIH-3T3 whole cell lysate/extract
- E. 30 µg BCL-1 lysate/extract
- F. 30 µg Raw264.7 whole cell lysate/extract
- G. 30 µg C2C12 whole cell lysate/extract

7.5% SDS-PAGE

Lamin B2 antibody [N3C2], Internal (GTX109894) dilution: 1:500

The HRP-conjugated anti-rabbit IgG antibody (GTX213110-01) was used to detect the primary antibody.

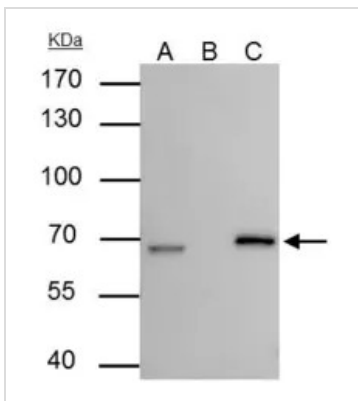

GTX109894 IHC-P Image

Lamin B2 antibody [N3C2], Internal detects LMNB2 protein at on Cal27 xenograft by immunohistochemical analysis.

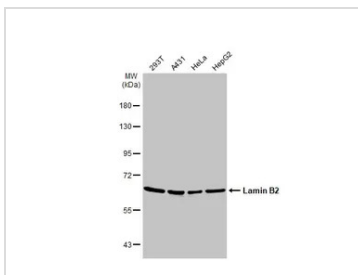
Sample: Paraffin-embedded Cal27 xenograft.

Lamin B2 antibody [N3C2], Internal (GTX109894) dilution: 1:500.

Antigen Retrieval: Trilogy™ (EDTA based, pH 8.0) buffer, 15min


GTX109894 IP Image

Lamin B2 antibody [N3C2], Internal immunoprecipitates Lamin B2 protein in IP experiments. IP Sample: HepG2 whole cell lysate/extract A : 30 µg whole cell lysate/extract of Lamin B2 protein expressing HepG2 cells B : Control with 3 µg of pre-immune rabbit IgG C : Immunoprecipitation of Lamin B2 by 3 µg of Lamin B2 antibody [N3C2], Internal (GTX109894) 7.5% SDS-PAGE The immunoprecipitated Lamin B2 protein was detected by Lamin B2 antibody [N3C2], Internal (GTX109894) diluted at 1 : 1000. EasyBlot anti-rabbit IgG (HRP) (GTX221666-01) was used as a secondary reagent.


GTX109894 WB Image

Various whole cell extracts (30 µg) were separated by 7.5% SDS-PAGE, and the membrane was blotted with Lamin B2 antibody [N3C2], Internal (GTX109894) diluted at 1:1000. The HRP-conjugated anti-rabbit IgG antibody (GTX213110-01) was used to detect the primary antibody.



For full product information, images and publications, please visit our [website](https://www.genetex.com).