

SALL4 antibody [C1C2], Internal

Cat. No. GTX109983

Host	Rabbit
Clonality	Polyclonal
Isotype	IgG
Applications	WB, ICC/IF, IHC-P
Reactivity	Human, Mouse, Pig

[References \(7 \)](#)

Package

100 µl, 25 µl

Applications

Application Note

*Optimal dilutions/concentrations should be determined by the researcher.

Suggested dilution	Recommended dilution
WB	1:500-1:3000
ICC/IF	1:100-1:1000
IHC-P	1:100-1:1000

Not tested in other applications.

Calculated MW 112 kDa. ([Note](#))

Product Note This antibody may not be suitable for mouse IHC-P assay, as its mouse reactivity is based on ICC/IF testing.

Properties

Form	Liquid
Buffer	0.1M Tris, 0.1M Glycine, 10% Glycerol
Preservative	0.01% Thimerosal
Storage	Store as concentrated solution. Centrifuge briefly prior to opening vial. For short-term storage (1-2 weeks), store at 4°C. For long-term storage, aliquot and store at -20°C or below. Avoid multiple freeze-thaw cycles.
Concentration	1 mg/ml (Please refer to the vial label for the specific concentration.)
Immunogen	Recombinant protein encompassing a sequence within the center region of human SALL4. The exact sequence is proprietary.
Purification	Purified by antigen-affinity chromatography.
Conjugation	Unconjugated

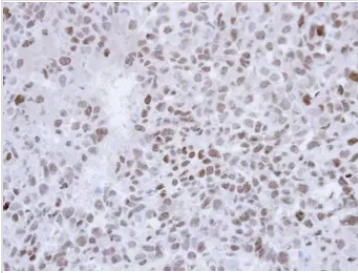


For full product information, images and publications, please visit our [website](#).

For laboratory research use only. Not for any clinical, therapeutic, or diagnostic use in humans or animals. Not for animal or human consumption.

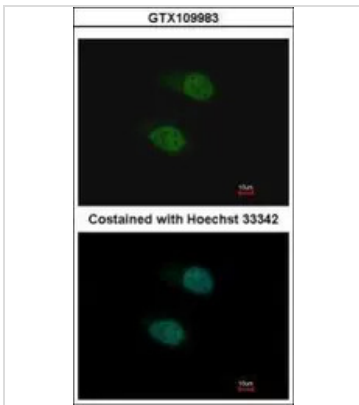
Note

Purchasers shall not, and agree not to enable third parties to, analyze, copy, reverse engineer or otherwise attempt to determine the structure or sequence of the product.

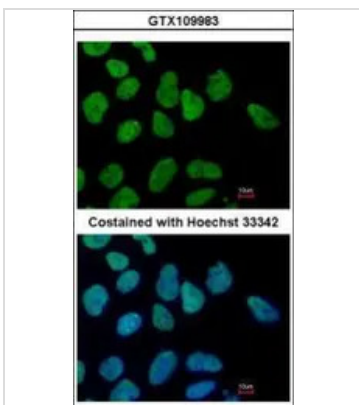
DATA IMAGES

GTx109983 IHC-P Image

Immunohistochemical analysis of paraffin-embedded CL1-0 xenograft , using SALL4(GTx109983) antibody at 1:500 dilution.

Antigen Retrieval: Trilogy™ (EDTA based, pH 8.0) buffer, 15min


GTx109983 ICC/IF Image

Immunofluorescence analysis of paraformaldehyde-fixed HeLa, using SALL4(GTx109983) antibody at 1:500 dilution.


GTx109983 ICC/IF Image

Immunofluorescence analysis of paraformaldehyde-fixed Human ESC, using SALL4(GTx109983) antibody at 1:400 dilution.



For full product information, images and publications, please visit our [website](#).