

ZIC3 antibody [N3C3]

Cat. No. GTX109987

Host	Rabbit
Clonality	Polyclonal
Isotype	IgG
Applications	WB, ICC/IF, IHC-Fr
Reactivity	Human, Rat

Package
100 µl, 25 µl

Applications

Application Note

*Optimal dilutions/concentrations should be determined by the researcher.

Suggested dilution	Recommended dilution
WB	1:500-1:3000
ICC/IF	1:100-1:1000
IHC-Fr	1:100-1:1000

Not tested in other applications.

Calculated MW 51 kDa. ([Note](#))

Properties

Form	Liquid
Buffer	0.1M Tris, 0.1M Glycine, 10% Glycerol
Preservative	0.01% Thimerosal
Storage	Store as concentrated solution. Centrifuge briefly prior to opening vial. For short-term storage (1-2 weeks), store at 4°C. For long-term storage, aliquot and store at -20°C or below. Avoid multiple freeze-thaw cycles.
Concentration	0.84 mg/ml (Please refer to the vial label for the specific concentration.)
Immunogen	Recombinant protein encompassing a sequence within the center region of human ZIC3. The exact sequence is proprietary.
Purification	Purified by antigen-affinity chromatography.
Conjugation	Unconjugated

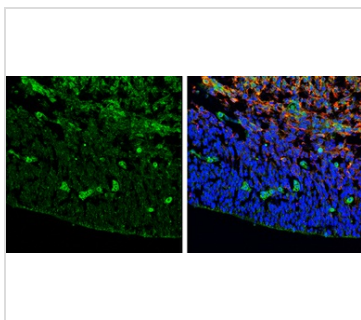
Note

For laboratory research use only. Not for any clinical, therapeutic, or diagnostic use in humans or animals. Not for animal or human consumption.

Purchasers shall not, and agree not to enable third parties to, analyze, copy, reverse engineer or otherwise attempt to determine the structure or sequence of the product.



For full product information, images and publications, please visit our [website](#).

DATA IMAGES

GTX109987 IHC-Fr Image

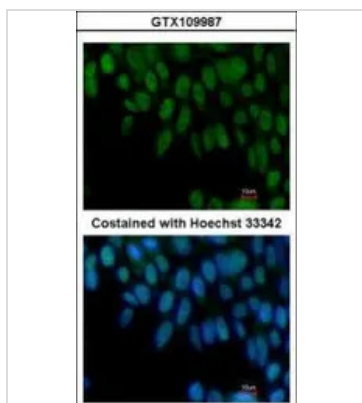
ZIC3 antibody [N3C3] detects ZIC3 protein expression by immunohistochemical analysis.

Sample: Frozen sectioned E13.5 Rat brain.

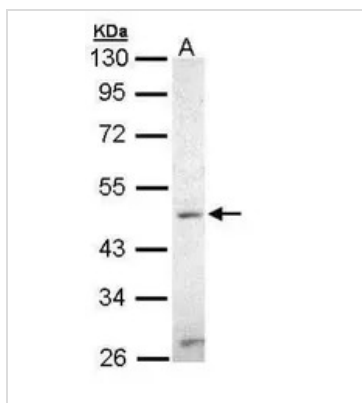
Green: ZIC3 protein stained by ZIC3 antibody [N3C3] (GTX109987) diluted at 1:250.

Red: beta Tubulin 3/ TUJ1, a mature neuron marker, stained by beta Tubulin 3/ TUJ1 antibody [GT11710] (GTX631836) diluted at 1:500.

Blue: Fluoroshield with DAPI (GTX30920).


GTX109987 ICC/IF Image

Immunofluorescence analysis of paraformaldehyde-fixed Human ESC, using ZIC3(GTX109987) antibody at 1:100 dilution.


GTX109987 WB Image

Sample (30 ug of whole cell lysate)

A: Hep G2 (GTX27900)

10% SDS PAGE

GTX109987 diluted at 1:500



For full product information, images and publications, please visit our [website](https://www.genetex.com).