

NPR-C antibody [N3C3]

Cat. No. GTX110023

Host	Rabbit
Clonality	Polyclonal
Isotype	IgG
Applications	WB, IHC-P
Reactivity	Mouse, Rat, Rabbit, Chicken

References (3)

Package

100 µl, 25 µl

Applications

Application Note

*Optimal dilutions/concentrations should be determined by the researcher.

Suggested dilution	Recommended dilution
WB	Assay dependent
IHC-P	1:100-1:1000

Not tested in other applications.

Calculated MW 60 kDa. ([Note](#))

Properties

Form	Liquid
Buffer	PBS, 20% Glycerol
Preservative	0.025% ProClin 300
Storage	Store as concentrated solution. Centrifuge briefly prior to opening vial. For short-term storage (1-2 weeks), store at 4°C. For long-term storage, aliquot and store at -20°C or below. Avoid multiple freeze-thaw cycles.
Concentration	1.77 mg/ml (Please refer to the vial label for the specific concentration.)
Immunogen	Recombinant protein encompassing a sequence within the center region of human NPR-C. The exact sequence is proprietary.
Purification	Purified by antigen-affinity chromatography.
Conjugation	Unconjugated

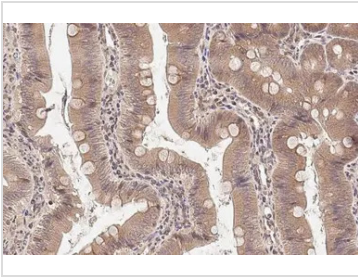
Note

For laboratory research use only. Not for any clinical, therapeutic, or diagnostic use in humans or animals. Not for animal or human consumption.

Purchasers shall not, and agree not to enable third parties to, analyze, copy, reverse engineer or otherwise attempt to determine the structure or sequence of the product.



For full product information, images and publications, please visit our [website](#).

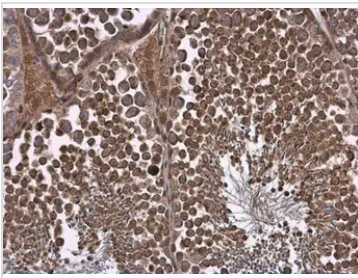
DATA IMAGES

GTX110023 IHC-P Image

NPR-C antibody [N3C3] detects NPR-C protein at cell membrane by immunohistochemical analysis.

Sample: Paraffin-embedded rat duodenum.

NPR-C stained by NPR-C antibody [N3C3] (GTX110023) diluted at 1:500.

Antigen Retrieval: Citrate buffer, pH 6.0, 15 min

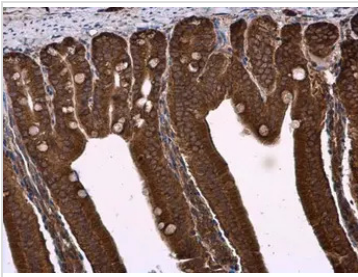

GTX110023 IHC-P Image

NPR-C antibody [N3C3] detects NPR-C protein at cell membrane and cytoplasm in mouse testis by immunohistochemical analysis.

Sample: Paraffin-embedded mouse testis.

NPR-C antibody [N3C3] (GTX110023) diluted at 1:500.

Antigen Retrieval: Citrate buffer, pH 6.0, 15 min


GTX110023 IHC-P Image

NPR-C antibody [N3C3] detects NPR-C protein at cell membrane and cytoplasm in mouse duodenum by immunohistochemical analysis.

Sample: Paraffin-embedded mouse duodenum.

NPR-C antibody [N3C3] (GTX110023) diluted at 1:500.

Antigen Retrieval: Citrate buffer, pH 6.0, 15 min



For full product information, images and publications, please visit our [website](https://www.genetex.com).