

O-GlcNAc transferase antibody [N1N2], N-term

Cat. No. GTX110136

Host	Rabbit
Clonality	Polyclonal
Isotype	IgG
Applications	WB, ICC/IF, IHC-P, IHC-Wm
Reactivity	Human, Mouse, Rat, Zebrafish

Package
100 µl, 25 µl

Applications

Application Note

*Optimal dilutions/concentrations should be determined by the researcher.

Suggested dilution	Recommended dilution
WB	1:500-1:3000
ICC/IF	Assay dependent
IHC-P	1:100-1:1000
IHC-Wm	Assay dependent

Not tested in other applications.

Calculated MW 117 kDa. ([Note](#))

Properties

Form	Liquid
Buffer	0.1M Tris, 0.1M Glycine, 10% Glycerol
Preservative	0.01% Thimerosal
Storage	Store as concentrated solution. Centrifuge briefly prior to opening vial. For short-term storage (1-2 weeks), store at 4°C. For long-term storage, aliquot and store at -20°C or below. Avoid multiple freeze-thaw cycles.
Concentration	1 mg/ml (Please refer to the vial label for the specific concentration.)
Immunogen	Recombinant protein encompassing a sequence within the N-terminus region of human O-GlcNAc transferase. The exact sequence is proprietary.
Purification	Purified by antigen-affinity chromatography.
Conjugation	Unconjugated



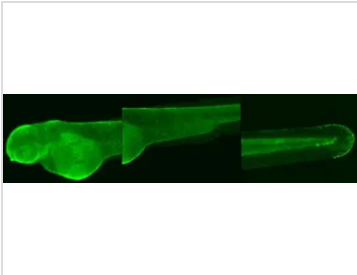
For full product information, images and publications, please visit our [website](#).

For laboratory research use only. Not for any clinical, therapeutic, or diagnostic use in humans or animals. Not for animal or human consumption.

Note

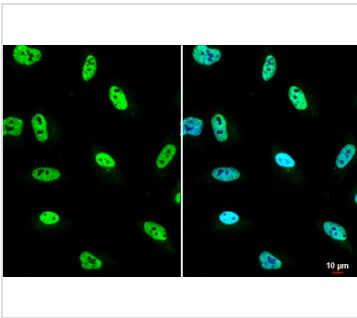
Purchasers shall not, and agree not to enable third parties to, analyze, copy, reverse engineer or otherwise attempt to determine the structure or sequence of the product.

DATA IMAGES



GTXT110136 IHC-Wm Image

Immunohistochemical analysis (whole mount) of zebrafish embryo, using O-GlcNAc transferase antibody [N1N2], N-term (GTXT110136) at 1:200 dilution.



GTXT110136 ICC/IF Image

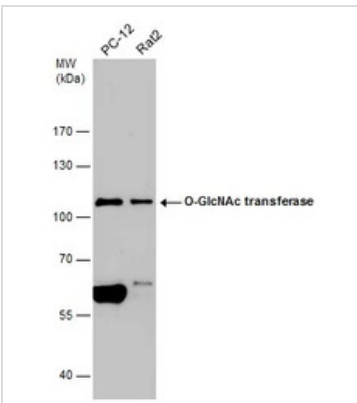
O-GlcNAc transferase antibody [N1N2], N-term detects O-GlcNAc transferase protein at nucleus by immunofluorescent analysis.

Sample: HeLa cells were fixed in 4% paraformaldehyde at RT for 15 min.

Green: O-GlcNAc transferase stained by O-GlcNAc transferase antibody [N1N2], N-term (GTXT110136) diluted at 1:500.

Blue: Fluoroshield with DAPI (GTXT30920).

Scale bar= 10μm.



GTXT110136 WB Image

Various whole cell extracts (30 μg) were separated by 7.5% SDS-PAGE, and the membrane was blotted with O-GlcNAc transferase antibody [N1N2], N-term (GTXT110136) diluted at 1:1000.



For full product information, images and publications, please visit our [website](https://www.genetex.com).