

FOG2 antibody

Cat. No. GTX110166

Host	Rabbit
Clonality	Polyclonal
Isotype	IgG
Applications	WB
Reactivity	Human, Mouse, Rat

References (4)

Package

100 µl, 25 µl

Applications

Application Note

*Optimal dilutions/concentrations should be determined by the researcher.

Suggested dilution	Recommended dilution
WB	1:500-1:3000
Not tested in other applications.	

Calculated MW 128 kDa. ([Note](#))

Properties

Form	Liquid
Buffer	0.1M Tris, 0.1M Glycine, 10% Glycerol
Preservative	0.01% Thimerosal
Storage	Store as concentrated solution. Centrifuge briefly prior to opening vial. For short-term storage (1-2 weeks), store at 4°C. For long-term storage, aliquot and store at -20°C or below. Avoid multiple freeze-thaw cycles.
Concentration	0.96 mg/ml (Please refer to the vial label for the specific concentration.)
Immunogen	Recombinant protein encompassing a sequence within the center region of human FOG2. The exact sequence is proprietary.
Purification	Purified by antigen-affinity chromatography.
Conjugation	Unconjugated

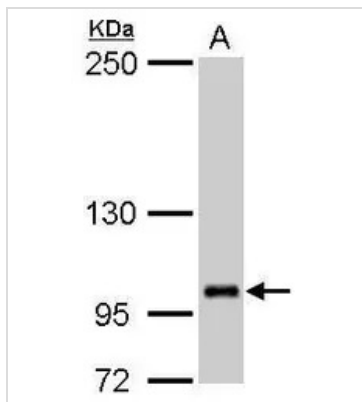
Note

For laboratory research use only. Not for any clinical, therapeutic, or diagnostic use in humans or animals. Not for animal or human consumption.

Purchasers shall not, and agree not to enable third parties to, analyze, copy, reverse engineer or otherwise attempt to determine the structure or sequence of the product.

For full product information, images and publications, please visit our [website](#).

DATA IMAGES

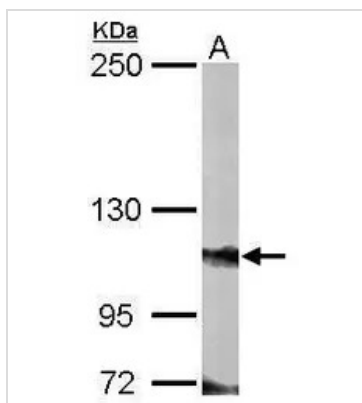
**GTX110166 WB Image**

FOG2/ZFPM2 antibody detects ZFPM2 protein by Western blot analysis.

A. 50 µg rat brain lysate/extract

5 % SDS-PAGE

FOG2/ZFPM2 antibody (GTX110166) dilution: 1:1000

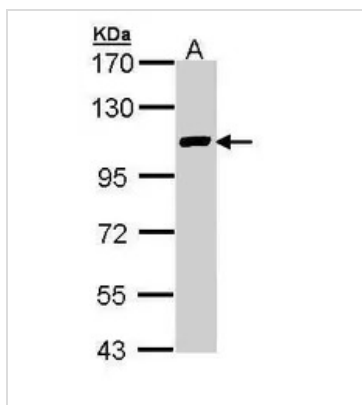
**GTX110166 WB Image**

Sample (50 ug of whole cell lysate)

A: Mouse brain

5% SDS PAGE

GTX110166 diluted at 1:3000

**GTX110166 WB Image**

Sample (30 ug of whole cell lysate)

A: HeLa

7.5% SDS PAGE

GTX110166 diluted at 1:1000



For full product information, images and publications, please visit our [website](#).