

SETDB1 antibody [N2C1], Internal

Cat. No. GTX110219

Host	Rabbit
Clonality	Polyclonal
Isotype	IgG
Applications	WB, ICC/IF, IHC-P, IP, ChIP assay
Reactivity	Human, Mouse

References (1)

Package

100 µl, 25 µl

Applications

Application Note

*Optimal dilutions/concentrations should be determined by the researcher.

Suggested dilution	Recommended dilution
WB	1:500-1:3000
ICC/IF	Assay dependent
IHC-P	Assay dependent
IP	1:100-1:500
ChIP assay	Assay dependent

Not tested in other applications.

Calculated MW 143 kDa. ([Note](#))

Properties

Form	Liquid
Buffer	PBS, 20% Glycerol
Preservative	0.025% ProClin 300
Storage	Store as concentrated solution. Centrifuge briefly prior to opening vial. For short-term storage (1-2 weeks), store at 4°C. For long-term storage, aliquot and store at -20°C or below. Avoid multiple freeze-thaw cycles.
Concentration	1 mg/ml (Please refer to the vial label for the specific concentration.)
Immunogen	Recombinant protein encompassing a sequence within the center region of human SETDB1. The exact sequence is proprietary.
Purification	Purified by antigen-affinity chromatography.
Conjugation	Unconjugated

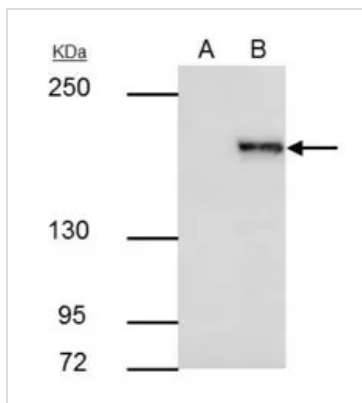


For full product information, images and publications, please visit our [website](#).

For laboratory research use only. Not for any clinical, therapeutic, or diagnostic use in humans or animals. Not for animal or human consumption.

Note

Purchasers shall not, and agree not to enable third parties to, analyze, copy, reverse engineer or otherwise attempt to determine the structure or sequence of the product.

DATA IMAGES

GTX110219 IP Image

SETDB1 antibody [N2C1], Internal immunoprecipitates SETDB1 protein in IP experiments.

IP samples: HeLa nuclear extract

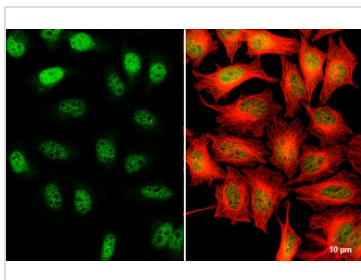
A. Control with 4 µg of preimmune Rabbit IgG

B. Immunoprecipitation of SETDB1 protein by 4 µg SETDB1 antibody [N2C1], Internal (GTX110219)

5 % SDS-PAGE

The immunoprecipitated SETDB1 protein was detected by SETDB1 antibody [N2C1], Internal (GTX110219) diluted at 1:1000.

[EasyBlot anti-rabbit IgG (GTX221666-01) was used as a secondary reagent]


GTX110219 ICC/IF Image

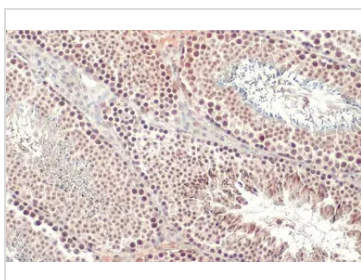
SETDB1 antibody [N2C1], Internal detects SETDB1 protein at nucleus by immunofluorescent analysis.

Sample: HeLa cells were fixed in 4% paraformaldehyde at RT for 15 min.

Green: SETDB1 stained by SETDB1 antibody [N2C1], Internal (GTX110219) diluted at 1:500.

Red: alpha Tubulin, a cytoskeleton marker, stained by alpha Tubulin antibody [GT114] (GTX628802) diluted at 1:1000.

Scale bar = 10µm.

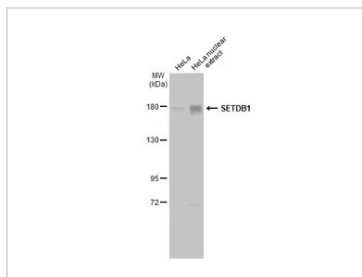

GTX110219 IHC-P Image

SETDB1 antibody [N2C1], Internal detects SETDB1 protein at nucleus by immunohistochemical analysis.

Sample: Paraffin-embedded mouse testis.

SETDB1 stained by SETDB1 antibody [N2C1], Internal (GTX110219) diluted at 1:500.

Antigen Retrieval: Citrate buffer, pH 6.0, 15 min


GTX110219 WB Image

HeLa whole cell and nuclear extracts (30 µg) were separated by 5% SDS-PAGE, and the membrane was blotted with SETDB1 antibody [N2C1], Internal (GTX110219) diluted at 1:1000. The HRP-conjugated anti-rabbit IgG antibody (GTX213110-01) was used to detect the primary antibody.



For full product information, images and publications, please visit our [website](https://www.genetex.com).